

# SYMMETRY MODERATE GROWTH PORTFOLIO

---

## **Annual Management Report of Fund Performance**

*For the Year Ended March 31, 2023*

*This Annual Management Report of Fund Performance contains financial highlights but does not contain the complete annual financial statements of the investment fund. You may obtain a copy of the annual financial statements, at no cost, by contacting us using one of the methods noted under Fund Formation and Series Information or by visiting the SEDAR website at [www.sedar.com](http://www.sedar.com).*

*Securityholders may also contact us using one of these methods to request a copy of the investment fund's interim financial report, proxy voting policies and procedures, proxy voting disclosure record or quarterly portfolio disclosure. For more information, please refer to the Fund's Simplified Prospectus and Fund Facts, which may also be obtained, at no cost, using any of the methods outlined above.*

*For the Fund's current net asset values per security and for more recent information on general market events, please visit our website.*

### **A NOTE ON FORWARD-LOOKING STATEMENTS**

*This report may contain forward-looking statements that reflect our current expectations or forecasts of future events. Forward-looking statements include statements that are predictive in nature, depend upon or refer to future events or conditions, or include words such as "expects", "anticipates", "intends", "plans", "believes", "estimates", "preliminary", "typical" and other similar expressions. In addition, these statements may relate to future corporate actions, future financial performance of a fund or a security and their future investment strategies and prospects. Forward-looking statements are inherently subject to, among other things, risks, uncertainties and assumptions that could cause actual events, results, performance or prospects to differ materially from those expressed in, or implied by, these forward-looking statements. These risks, uncertainties and assumptions include, without limitation, general economic, political and market factors in North America and internationally, interest and foreign exchange rates, the volatility of global equity and capital markets, business competition, technological change, changes in government regulations, changes in securities laws and regulations, changes in tax laws, unexpected judicial or regulatory proceedings, catastrophic events, outbreaks of disease or pandemics (such as COVID-19), and the ability of Mackenzie to attract or retain key employees. The foregoing list of important risks, uncertainties and assumptions is not exhaustive. Please consider these and other factors carefully and do not place undue reliance on forward-looking statements.*

*The forward-looking information contained in this report is current only as of the date of this report. There should not be an expectation that such information will in all circumstances be updated, supplemented or revised whether as a result of new information, changing circumstances, future events or otherwise.*

# SYMMETRY MODERATE GROWTH PORTFOLIO

ANNUAL MANAGEMENT REPORT OF FUND PERFORMANCE | For the Year Ended March 31, 2023

## Management Discussion of Fund Performance

June 5, 2023

This Management Discussion of Fund Performance presents the portfolio management team's view on the significant factors and developments that have affected the Fund's performance and outlook in the year ended March 31, 2023 (the "period"). If the Fund was established during the period, "period" represents the period since inception.

In this report, "Mackenzie" and "the Manager" refer to Mackenzie Financial Corporation, the manager of the Fund. In addition, net asset value ("NAV") refers to the value of the Fund as calculated for transaction purposes, on which the discussion of Fund performance is based.

Please read *A Note on Forward-Looking Statements* on the first page of this document.

### Investment Objective and Strategies

The Fund seeks long-term capital growth and income by investing primarily in other mutual funds that invest in Canadian and foreign equities, fixed income securities and other asset categories, although it may also invest in securities directly. The Fund's asset mix will generally range between 50%–70% equities and 20%–50% fixed income securities. The Fund diversifies in terms of geographic exposure, equity factor exposure, sector exposure, company market capitalization, portfolio manager style, credit quality and duration.

### Risk

The risks of the Fund remain as discussed in the Fund's Simplified Prospectus.

The Fund is suitable for medium-term investors looking for a managed asset portfolio fund to hold as a key part of their portfolio, who can handle the volatility of stock and bond markets, and who have a low to medium tolerance for risk.

### Results of Operations

#### Investment Performance

The performance of all series in the current and previous periods is shown in the *Past Performance* section of the report. Performance will vary by series primarily because fees and expenses differ between series, or because securities of a series were not issued and outstanding for the entire reporting period. Please refer to the *Fund Formation and Series Information* section of this report for the varying management and administration fees payable by each series. The following comparison to market indices is intended to help investors understand the Fund's performance relative to the general performance of the markets. However, the Fund's mandate may be different from that of the indices shown.

During the period, the Fund's Series A securities returned –5.2%, and Series LB securities returned –5.3% (after deducting fees and expenses paid by the series). This compares with a return of 0.2% for the Fund's broad-based index, the MSCI AC (All Country) World (Net) Index, and a return of –1.7% for a blended index.\* All index and series returns are calculated on a total return basis in Canadian dollar terms. Investors cannot invest in an index without incurring fees, expenses and commissions, which are not reflected in the index returns.

Global and Canadian equities fell over the period in local currency terms, driven lower by rising interest rates, volatile commodity prices and forecasts of economic weakness. Employment remained strong, and persistently high inflation led many global central banks to raise their policy rates significantly. Higher interest rates

contributed to a crisis in the U.S. banking system in March. In Canada, consumer spending was resilient. In fixed income, global yields rose sharply, and Government of Canada bond yields increased, particularly among shorter-term bonds. Volatility in fixed income markets was heightened by the magnitude of central bank policy actions and by geopolitical tensions.

Within the MSCI AC (All Country) World (Net) Index, Turkey, Greece and Denmark were the strongest-performing markets in Canadian dollar terms, while Colombia, the United Arab Emirates and Qatar were the weakest. The energy, consumer staples and industrials sectors were the strongest performers, while real estate, communication services and consumer discretionary were the weakest.

Within the S&P/TSX Composite Index, consumer staples, consumer discretionary and industrials were the strongest sectors, while health care, real estate and financials were the weakest.

The following discussion reflects the Fund's allocation decisions and the activities and performance of its underlying investment funds and other directly held securities. The Fund underperformed the broad-based index, with the Fund's allocations to fixed income and Canadian equities, which underperformed global equities in the period, detracting from performance. Given the Fund's mandate, the return of the blended index is a more meaningful comparison.

The Fund underperformed the blended index, with currency activities detracting from performance. The Fund's foreign currency exposure is actively managed to help mitigate risk and take advantage of opportunities at the total portfolio level.

Within the equity portion of the Fund, stock selection in the health care sector detracted from performance. Stock selection in the United States and Canada contributed to performance. In sector terms, underweight exposure to information technology and stock selection in consumer discretionary contributed to performance.

Within the fixed income portion of the Fund, holdings in government bonds, particularly federal bonds, detracted from performance. Security selection in corporate bonds, particularly in the financial and real estate sectors, contributed to performance.

Over the period, neither portfolio activity nor market developments significantly changed the positioning of the Fund. Changes to the portfolio included the elimination of the allocation to iShares Core S&P 500 ETF.

#### Net Assets

The Fund's net assets decreased by 13.1% during the period to \$1.9 billion. This change was composed primarily of \$109.2 million in net losses (including any interest and/or dividend income) from investment performance, after deducting fees and expenses, and a decrease of \$170.6 million due to net securityholder activity (including sales, redemptions and cash distributions).

#### Fees and Expenses

The management expense ratio ("MER") for each series during the year ended March 31, 2023, was generally similar to the MER for the year ended March 31, 2022. Total expenses paid vary from period to period mainly as a result of changes in average assets in each series. The MER for Series D decreased due to a decrease in the management fee rate effective April 4, 2022, as noted in the *Fund Formation and Series Information* section of the report. The MERs for all series are presented in the *Financial Highlights* section of this report.

\* The blended index is composed of a 45% weighting in the MSCI AC (All Country) World (Net) Index (returned 0.2%), a 30% weighting in the FTSE Canada Universe Bond Index (returned –2.0%), a 15% weighting in the S&P/TSX Composite Index (returned –5.2%) and a 10% weighting in the ICE BofA Global Broad Market (Hedged) Index (returned –5.4%).

# SYMMETRY MODERATE GROWTH PORTFOLIO

ANNUAL MANAGEMENT REPORT OF FUND PERFORMANCE | For the Year Ended March 31, 2023

## Recent Developments

Late in the period, global economic growth picked up, supported by a warm winter in Europe and the end of China's "zero-COVID-19" policy. The Mackenzie Multi-Asset Strategies team expects that over the coming months, the U.S. economy will continue overheating and the global macroeconomic environment will remain one of high inflation and resilient growth. The team believes China's reopening, if successful, will both keep global inflation elevated and support the global economy. At period-end, improving Purchasing Managers' Index and transportation data suggested the Chinese economy was strengthening slowly but surely.

The team believes that as a result of the March banking crisis, the U.S. Federal Reserve will be more hesitant to aggressively raise interest rates to bring inflation down. In Canada, if inflation remains above 2%, strong employment continues and the housing market responds to the pause in the Bank of Canada's cycle of interest rate increases, the team does not expect lower rates despite market expectations for cuts in summer 2023.

Effective March 31, 2023, KPMG LLP was appointed as the auditor of the Fund.

## Related Party Transactions

### Management and Administration Services

For each applicable series, the Fund paid management fees and administration fees to the Manager at the annual rates specified under *Fund Formation and Series Information* in this report and as more fully described in the Prospectus. In return for the administration fees, the Manager pays all costs and expenses (other than certain specified fund costs) required to operate the Fund that are not included in management fees. See also *Management Fees*.

### Other Related Party Transactions

Investment funds managed by Mackenzie and its affiliates may invest in the Fund. All these investments are made on a prospectus-exempt basis in accordance with the investment objectives of those funds. At March 31, 2023, funds managed by The Canada Life Assurance Company and Canada Life Investment Management Ltd. owned 1.1% of the Fund's NAV. All related party transactions are based on the NAV per security on each transaction day. As a result of these investments, the Fund may be subject to large transaction risk as discussed in the Prospectus. Mackenzie manages this risk to reduce the possibility of any adverse effect on the Fund or on its investors, through such processes as requiring advance notice of large redemptions.

At March 31, 2023, Mackenzie had an investment of \$0.03 million in the Fund (less than 0.1% of the Fund's NAV).

During the period, the Fund received \$0.1 million in income distributions from investments in exchange-traded funds ("ETFs") managed by Mackenzie to offset fees paid within those ETFs. There is no assurance that these distributions will continue in the future.

The Manager relied on an approval provided by the Mackenzie Funds' Independent Review Committee to appoint KPMG LLP as the auditor of the Fund, effective March 31, 2023.

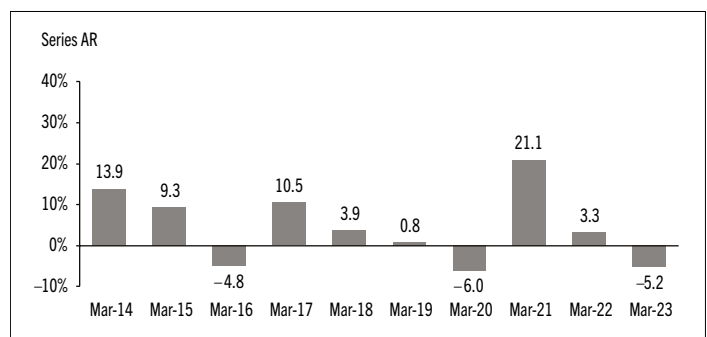
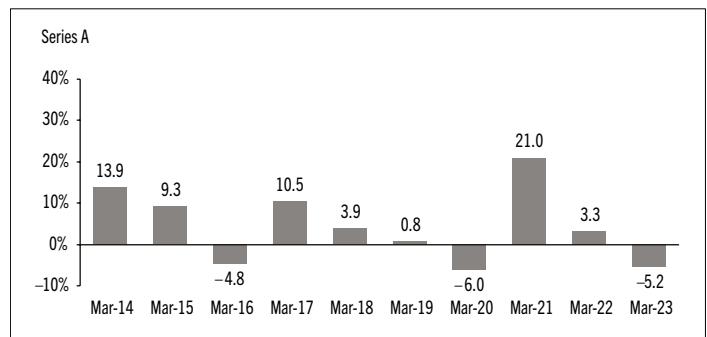
## Past Performance

The Fund's past performance information is presented in the following charts and table. It assumes all distributions made by the Fund in the periods presented are reinvested in additional securities of the relevant series of the Fund. The charts and table do not take into account sales, redemption, distribution or optional charges, or income taxes payable by any investor that would have reduced returns. The past performance of the Fund is not necessarily an indication of how it will perform in the future.

If you hold this Fund outside of a registered plan, income and capital gains distributions paid to you increase your income for tax purposes whether paid to you in cash or reinvested in additional securities of the Fund. The amount of reinvested taxable distributions is added to the adjusted cost base of the securities that you own. This would decrease your capital gain or increase your capital loss when you later redeem from the Fund, thereby ensuring that you are not taxed on this amount again. Please consult your tax advisor regarding your personal tax situation.

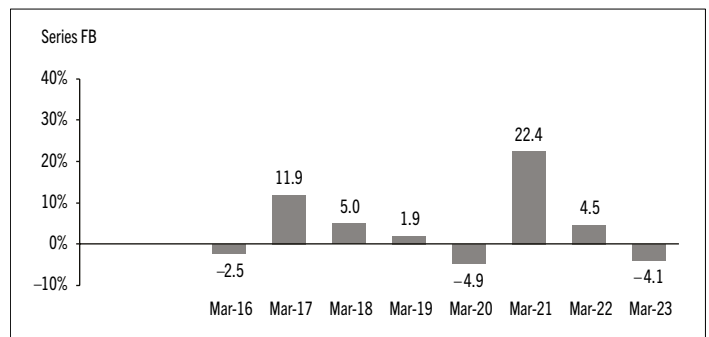
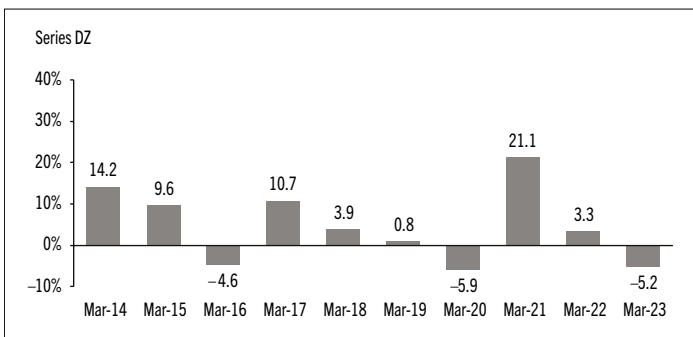
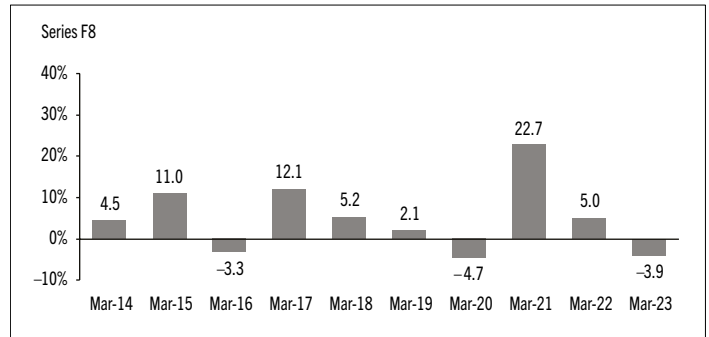
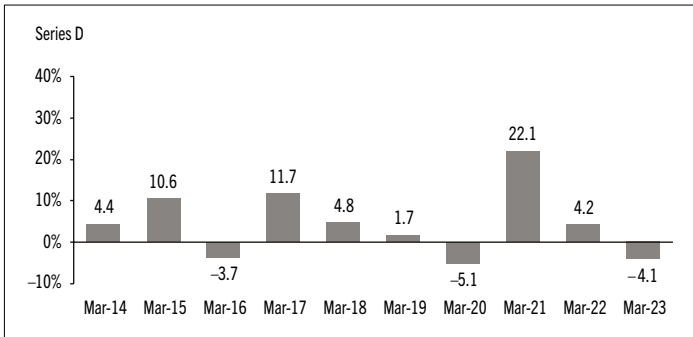
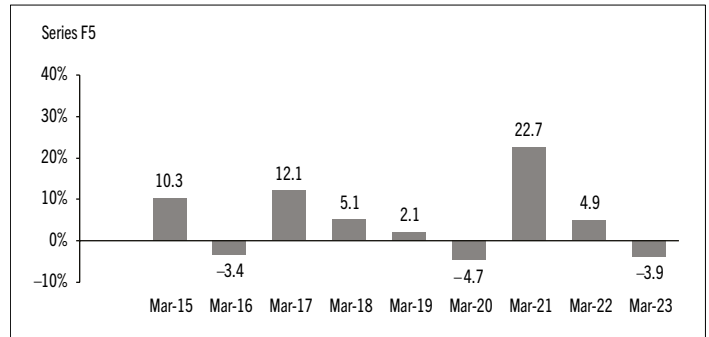
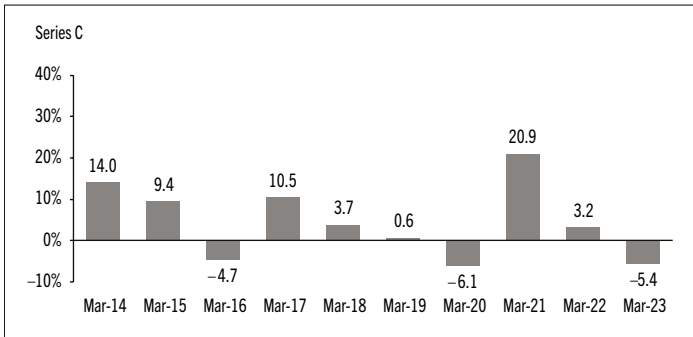
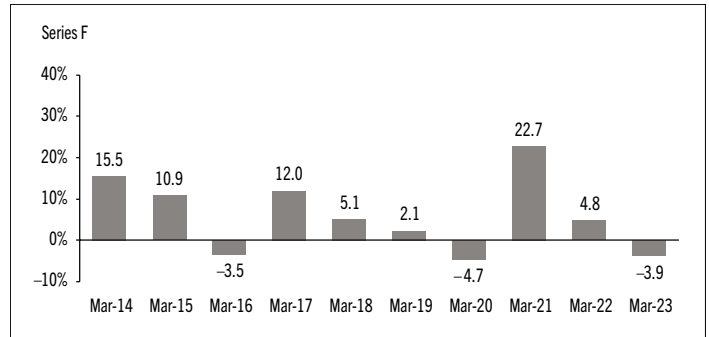
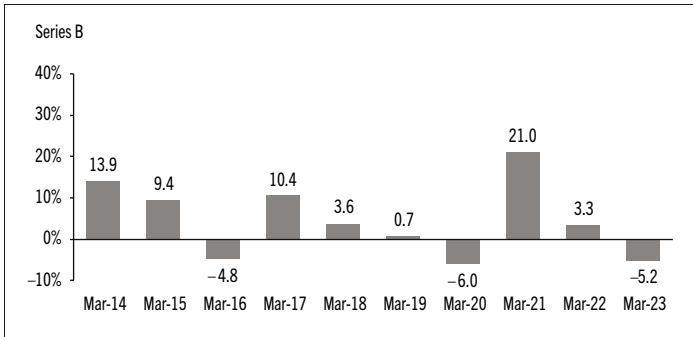
## Year-by-Year Returns

The following bar charts present the performance of each series of the Fund for each of the fiscal periods shown. The charts show, in percentage terms, how much an investment made on the first day of each fiscal period, or on the series inception or reinstatement date, as applicable, would have increased or decreased by the last day of the fiscal period presented. Series inception or reinstatement dates can be found under *Fund Formation and Series Information*.



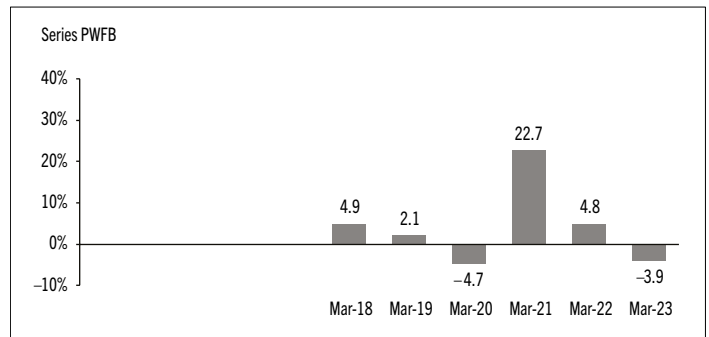
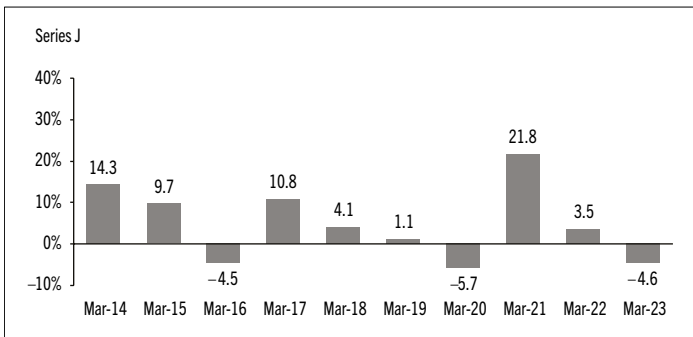
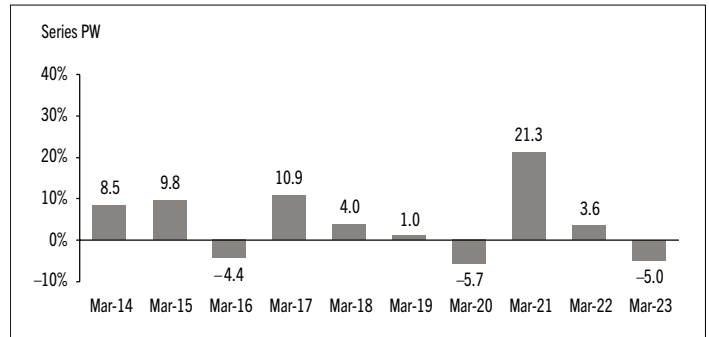
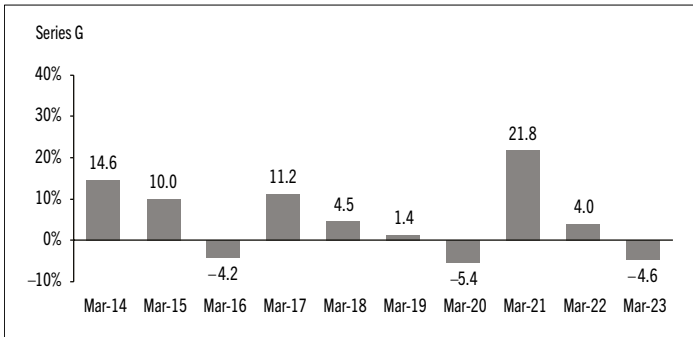
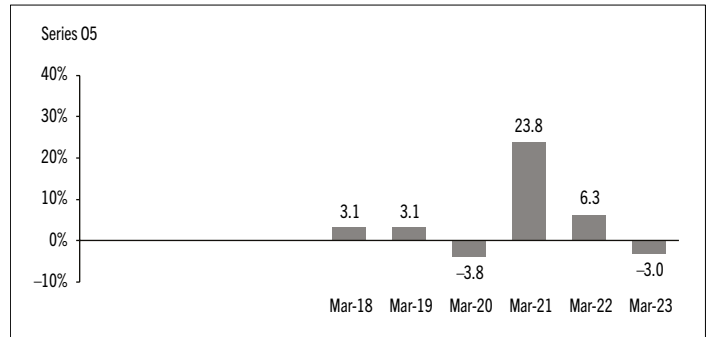
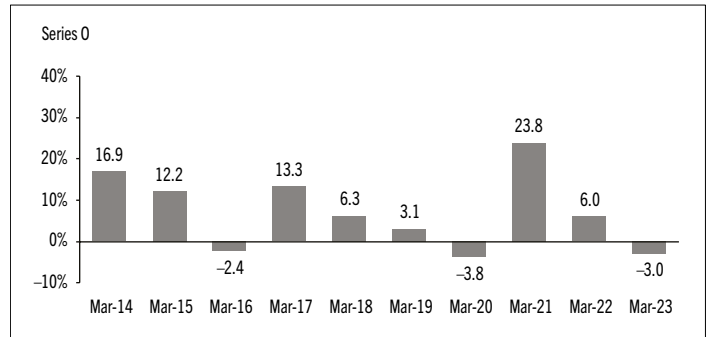
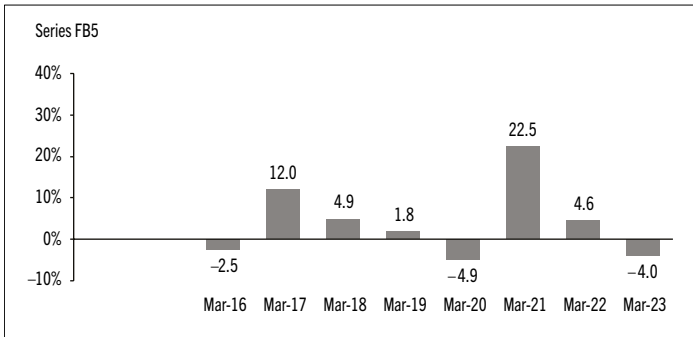
# SYMMETRY MODERATE GROWTH PORTFOLIO

ANNUAL MANAGEMENT REPORT OF FUND PERFORMANCE | For the Year Ended March 31, 2023



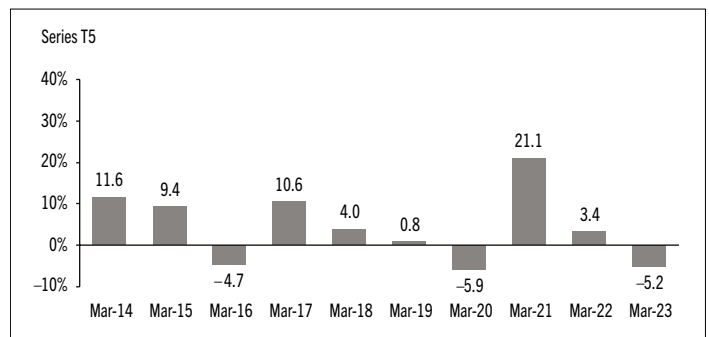
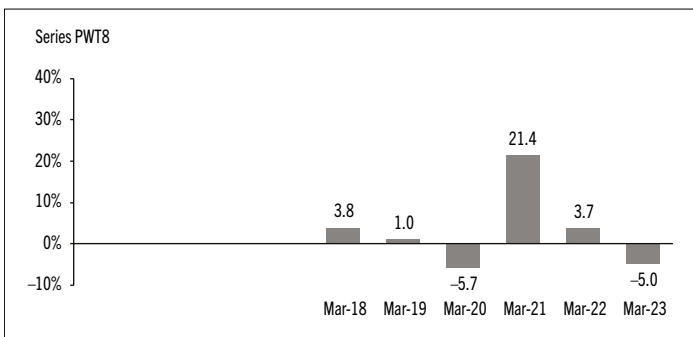
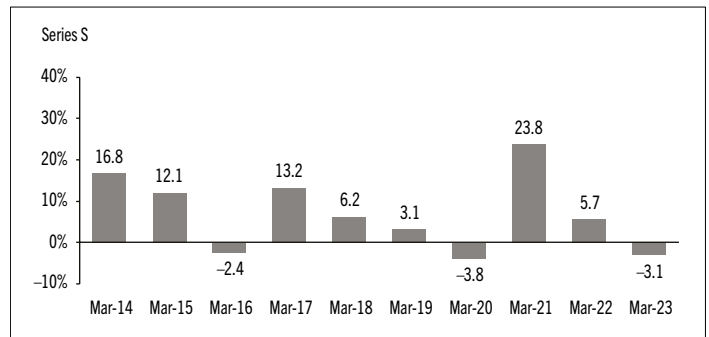
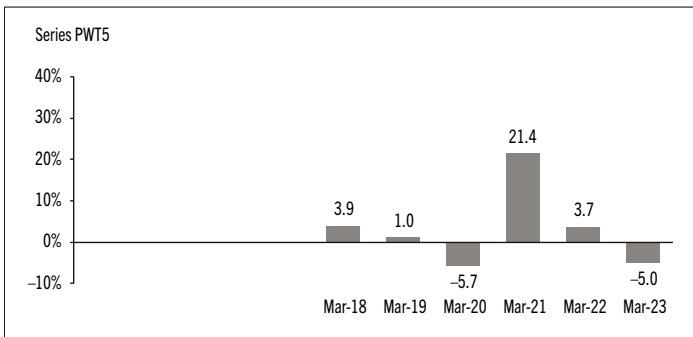
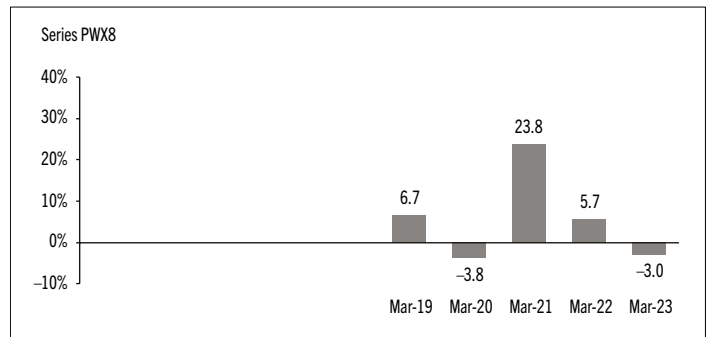
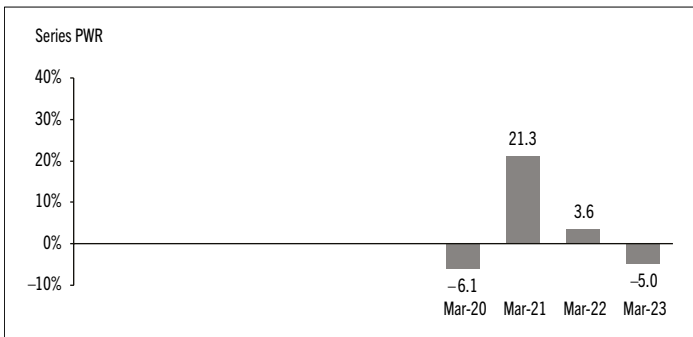
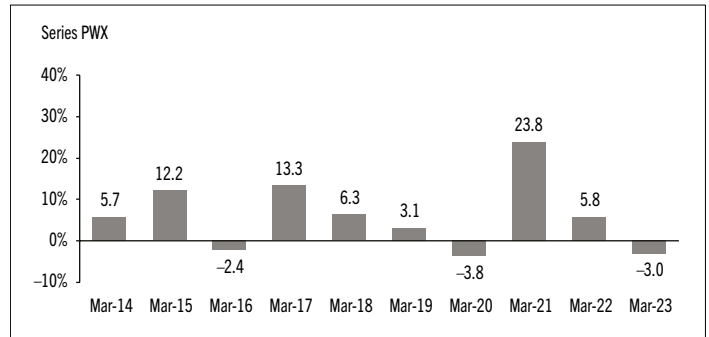
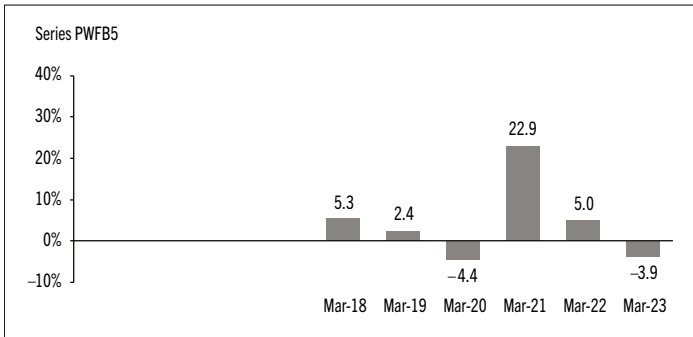
# SYMMETRY MODERATE GROWTH PORTFOLIO

ANNUAL MANAGEMENT REPORT OF FUND PERFORMANCE | For the Year Ended March 31, 2023



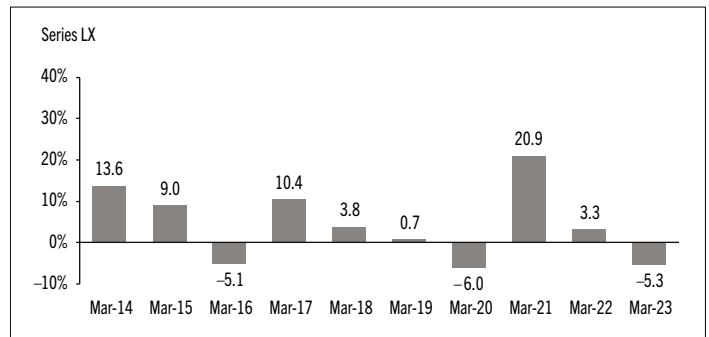
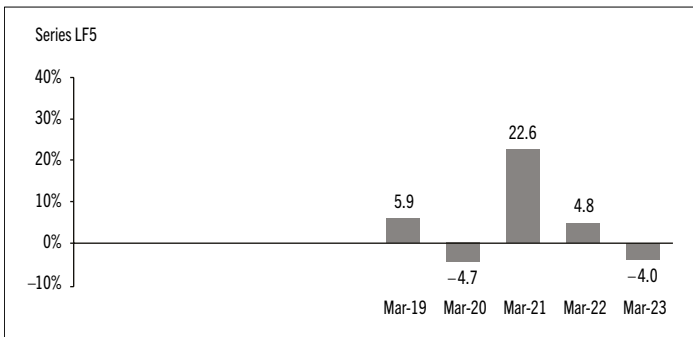
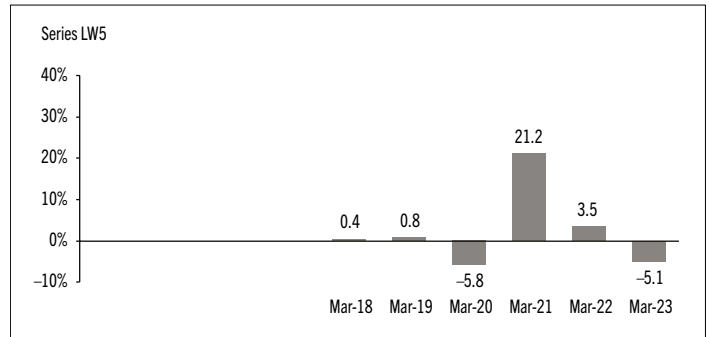
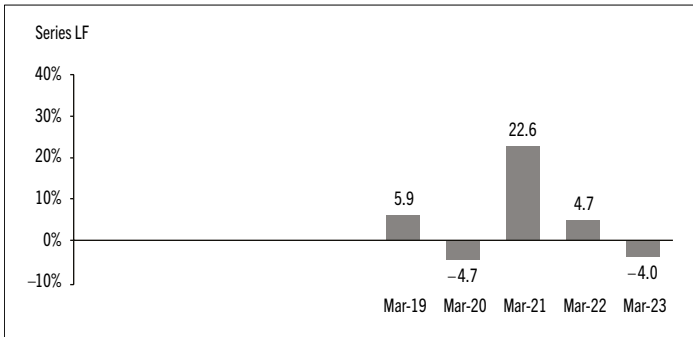
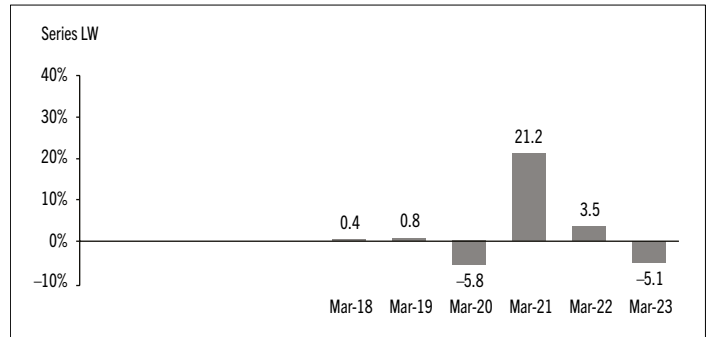
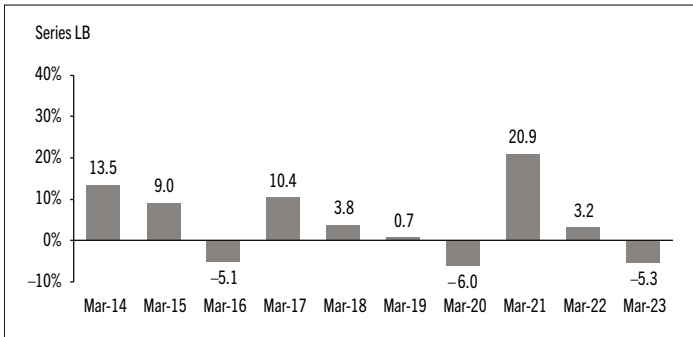
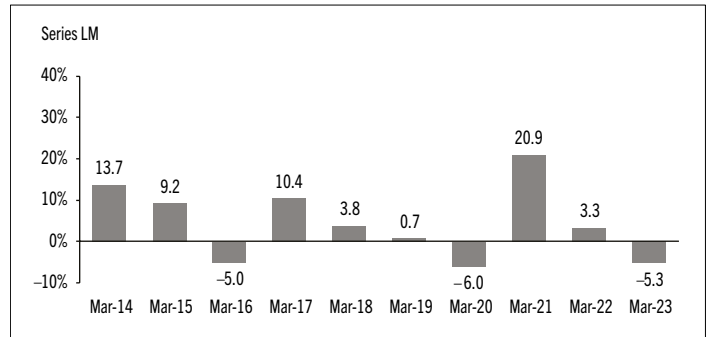
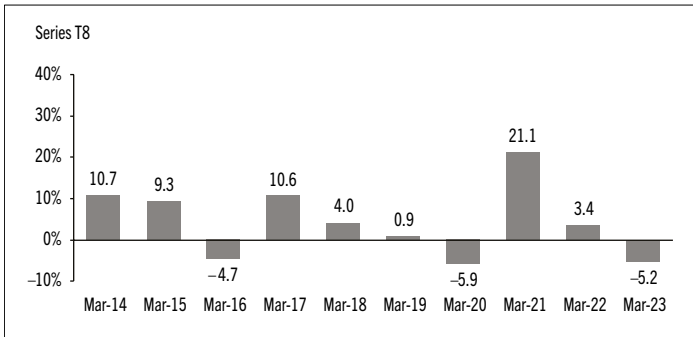
# SYMMETRY MODERATE GROWTH PORTFOLIO

ANNUAL MANAGEMENT REPORT OF FUND PERFORMANCE | For the Year Ended March 31, 2023



# SYMMETRY MODERATE GROWTH PORTFOLIO

ANNUAL MANAGEMENT REPORT OF FUND PERFORMANCE | For the Year Ended March 31, 2023



# SYMMETRY MODERATE GROWTH PORTFOLIO

ANNUAL MANAGEMENT REPORT OF FUND PERFORMANCE | For the Year Ended March 31, 2023

## Annual Compound Returns

The following table compares the historical annual compound total returns for each series of the Fund with the relevant index or indices shown below for each of the periods ended March 31, 2023. Investors cannot invest in an index without incurring fees, expenses and commissions, which are not reflected in these performance figures.

All index returns are calculated in Canadian dollars on a total return basis, meaning that all dividend payments, interest income accruals and interest payments are reinvested.

Percentage Return: <sup>1</sup>	1 Yr	3 Yr	5 Yr	10 Yr	Since Inception <sup>2</sup>
Series A	-5.2	5.8	2.4	4.3	n/a
Series AR	-5.2	5.8	2.4	4.3	n/a
Series B	-5.2	5.8	2.3	4.3	n/a
Series C	-5.4	5.7	2.2	4.3	n/a
Series D	-4.1	6.9	3.3	n/a	4.8
Series DZ	-5.2	5.8	2.4	4.5	n/a
Series F	-3.9	7.3	3.7	5.7	n/a
Series F5	-3.9	7.3	3.8	n/a	4.7
Series F8	-3.9	7.4	3.8	n/a	5.2
Series FB	-4.1	7.0	3.5	n/a	4.3
Series FB5	-4.0	7.1	3.6	n/a	4.3
Series FR	n/a	n/a	n/a	n/a	9.1
Series G	-4.6	6.5	3.0	5.0	n/a
Series J	-4.6	6.3	2.8	4.7	n/a
Series O	-3.0	8.4	4.8	6.9	n/a
Series O5	-3.0	8.5	4.8	n/a	5.0
Series PW	-5.0	6.1	2.6	n/a	4.3
Series PWFB	-3.9	7.3	3.7	n/a	3.9
Series PWFB5	-3.9	7.4	3.9	n/a	4.2
Series PWR	-5.0	6.1	n/a	n/a	2.9
Series PWT5	-5.0	6.2	2.6	n/a	2.8
Series PWT8	-5.0	6.2	2.6	n/a	2.8
Series PWX	-3.0	8.3	4.7	n/a	6.2
Series PWX8	-3.0	8.3	n/a	n/a	6.2
Series S	-3.1	8.2	4.7	6.8	n/a
Series T5	-5.2	5.9	2.4	n/a	4.2
Series T8	-5.2	5.9	2.4	n/a	4.2
Series LB	-5.3	5.8	2.3	4.2	n/a
Series LF	-4.0	7.2	n/a	n/a	5.2
Series LF5	-4.0	7.3	n/a	n/a	5.2
Series LM	-5.3	5.8	2.3	4.2	n/a
Series LW	-5.1	6.0	2.5	n/a	2.4
Series LW5	-5.1	6.0	2.5	n/a	2.4
Series LX	-5.3	5.8	2.3	n/a	4.3
Blended Index	-1.7	8.0	5.4	7.0	Note 3
MSCI AC (All Country) World (Net) Index*	0.2	13.8	8.0	11.2	Note 4
FTSE Canada Universe Bond Index	-2.0	-1.7	0.9	1.9	Note 5
S&P/TSX Composite Index	-5.2	18.0	8.8	7.9	Note 6
ICE BofA Global Broad Market (Hedged) Index	-5.4	-2.9	0.3	1.7	Note 7

\* Broad-based index

The blended index is composed of 45% MSCI AC (All Country) World (Net) Index, 30% FTSE Canada Universe Bond Index, 15% S&P/TSX Composite Index and 10% ICE BofA Global Broad Market (Hedged) Index.

The MSCI AC (All Country) World (Net) Index represents large- and mid-cap equity performance across 23 developed and 24 emerging markets. Net total returns are calculated after the deduction of withholding tax from the foreign income and dividends of its constituents.

The FTSE Canada Universe Bond Index is a broad measure of Canadian bonds with terms to maturity of more than one year. It includes federal, provincial, municipal and corporate bonds rated "BBB" or higher.

The S&P/TSX Composite Index is a capitalization weighted index that represents some of the largest float adjusted stocks trading on the Toronto Stock Exchange.

The ICE BofA Global Broad Market (Hedged) Index tracks the performance of investment grade debt publicly issued in major domestic and eurobond markets, including sovereign, quasi-government, corporate, securitized and collateralized securities. Qualifying bonds must be rated "BBB" or higher and have a remaining term to maturity of at least one year. The foreign currency exposure is hedged to the Canadian dollar.

(1) The percentage return differs for each series because the management fee rate and expenses differ for each series.

(2) The return since inception for each series will differ when the inception date differs and is only provided when a series has been active for a period of less than 10 years.

(3) The return of the blended index since inception for each applicable series is as follows: Series D 6.6%, Series F5 6.2%, Series F8 6.6%, Series FB 5.7%, Series FB5 5.7%, Series FR 9.1%, Series O5 5.4%, Series PW 7.0%, Series PWFB 5.4%, Series PWFB5 5.4%, Series PWR 5.0%, Series PWT5 5.4%, Series PWT8 5.4%, Series PWX 6.7%, Series PWX8 6.5%, Series T5 7.0%, Series T8 7.0%, Series LF 6.4%, Series LF5 6.4%, Series LW 5.1%, Series LW5 5.1%, Series LX 7.2%.

(4) The return of the MSCI AC (All Country) World (Net) Index since inception for each applicable series is as follows: Series D 10.2%, Series F5 9.6%, Series F8 10.2%, Series FB 8.6%, Series FB5 8.6%, Series FR 14.7%, Series O5 8.4%, Series PW 10.6%, Series PWFB 8.4%, Series PWFB5 8.4%, Series PWR 8.1%, Series PWT5 8.4%, Series PWT8 8.4%, Series PWX 10.1%, Series PWX8 9.9%, Series T5 10.9%, Series T8 10.8%, Series LF 9.8%, Series LF5 9.8%, Series LW 8.0%, Series LW5 8.0%, Series LX 11.3%.

(5) The return of the FTSE Canada Universe Bond Index since inception for each applicable series is as follows: Series D 2.0%, Series F5 1.9%, Series F8 2.0%, Series FB 1.3%, Series FB5 1.3%, Series FR 3.4%, Series O5 1.1%, Series PW 2.3%, Series PWFB 0.9%, Series PWFB5 0.9%, Series PWR -0.1%, Series PWT5 0.9%, Series PWT8 0.9%, Series PWX 2.2%, Series PWX8 1.2%, Series T5 2.0%, Series T8 2.2%, Series LF 0.8%, Series LF5 0.8%, Series LW 0.8%, Series LW5 0.8%, Series LX 2.0%.

(6) The return of the S&P/TSX Composite Index since inception for each applicable series is as follows: Series D 7.6%, Series F5 6.8%, Series F8 7.6%, Series FB 8.4%, Series FB5 8.4%, Series FR 8.2%, Series O5 7.8%, Series PW 8.0%, Series PWFB 7.6%, Series PWFB5 7.6%, Series PWR 8.8%, Series PWT5 7.6%, Series PWT8 7.6%, Series PWX 7.7%, Series PWX8 10.3%, Series T5 8.0%, Series T8 8.3%, Series LF 10.7%, Series LF5 10.7%, Series LW 7.6%, Series LW5 7.6%, Series LX 8.5%.

(7) The return of the ICE BofA Global Broad Market (Hedged) Index since inception for each applicable series is as follows: Series D 1.7%, Series F5 1.6%, Series F8 1.7%, Series FB 0.9%, Series FB5 0.9%, Series FR 2.9%, Series O5 0.3%, Series PW 1.9%, Series PWFB 0.5%, Series PWFB5 0.5%, Series PWR -0.6%, Series PWT5 0.5%, Series PWT8 0.5%, Series PWX 1.9%, Series PWX8 0.4%, Series T5 1.8%, Series T8 1.9%, Series LF 0.2%, Series LF5 0.2%, Series LW 0.2%, Series LW5 0.2%, Series LX 1.8%.



# SYMMETRY MODERATE GROWTH PORTFOLIO

ANNUAL MANAGEMENT REPORT OF FUND PERFORMANCE | For the Year Ended March 31, 2023

## Summary of Investment Portfolio at March 31, 2023

EFFECTIVE PORTFOLIO ALLOCATION	% OF NAV
Equities	61.5
Equities	59.2
Long equity futures*	2.3
Short equity futures*	–
Bonds	37.0
Bonds	29.1
Long bond futures*	7.9
Cash and short-term investments	2.7
Mutual funds	0.2
Other assets (liabilities)	(1.4)

EFFECTIVE REGIONAL ALLOCATION	% OF NAV
United States	45.7
Canada	33.5
Other	6.7
United Kingdom	2.9
Cash and short-term investments	2.7
France	1.6
Japan	1.6
Australia	1.3
Germany	1.2
China	1.1
Netherlands	1.0
Switzerland	0.8
Sweden	0.5
Taiwan	0.4
India	0.4
Other assets (liabilities)	(1.4)

EFFECTIVE SECTOR ALLOCATION	% OF NAV
Corporate bonds	19.6
Financials	11.3
Information technology	9.9
Industrials	7.3
Foreign government bonds	6.5
Other	6.1
Health care	6.0
Consumer discretionary	5.3
Federal bonds	5.1
Energy	4.6
Consumer staples	4.2
Materials	3.9
Provincial bonds	3.6
Communication services	3.5
Cash and short-term investments	2.7
Utilities	1.6
Mutual funds	0.2
Other assets (liabilities)	(1.4)

\* Notional values represent 3.2% of NAV for long bond futures, 1.7% of NAV for long equity futures and –3.7% of NAV for short equity futures.

The effective allocation shows the portfolio, regional or sector exposure of the Fund calculated by combining its direct and indirect investments.

TOP 25 LONG POSITIONS	% OF NAV
Issuer/Underlying Fund	
Mack US Equity Pool Series R	21.6
Mack Canadian Bond Pool Series R	16.3
Mack Canadian Equity Pool Series R	12.5
Mack Comprehensive Equity Pool Series R	11.2
Mackenzie North American Corporate Bond Fund Series R	4.8
Cash and short-term investments	4.5
Mackenzie Enhanced Fixed Income Risk Premia Fund Series R	3.4
Mackenzie US Investment Grade Corporate Bond Index ETF (CAD-Hedged)	3.4
Mackenzie Global Dividend Fund Series R	2.9
Mack EAFE Equity Pool Series R	2.1
Mackenzie Canadian Equity Index ETF	1.9
Mackenzie Broad Risk Premia Collection Fund Series R	1.8
Mackenzie International Quantitative Large Cap Fund Series R	1.6
iShares iBoxx \$ Investment Grade Corporate Bond ETF	1.4
Mackenzie Global Macro Fund Series R	1.4
Mackenzie Sovereign Bond Fund Series R	1.1
Mackenzie Emerging Markets Large Cap Fund Series R	1.0
Mackenzie Emerging Markets Small Cap Fund Series R	0.9
Mackenzie Multi-Strategy Absolute Return Fund Series R	0.9
Mack Global Bond Pool Series R	0.8
Mackenzie Emerging Markets Bond Index ETF (CAD-Hedged)	0.6
Mackenzie International Dividend Fund Series R	0.5
Mackenzie Global Inflation-Linked Fund Series R	0.5
iShares Core S&P 500 ETF	0.5
Mackenzie US Quantitative Large Cap Fund Series R	0.4

Top long positions as a percentage of total net asset value	98.0
---	------

TOP 25 SHORT POSITIONS	% OF NAV
Issuer	
S&P 500 E-mini Futures	–
Yen-Denominated Nikkei 225 Futures	–
FTSE 100 Index Futures	–
S&P/TSX 60 Index Futures	–
Top short positions as a percentage of total net asset value	–

For the prospectus and other information about the underlying fund(s) held in the portfolio, visit [www.mackenzieinvestments.com](http://www.mackenzieinvestments.com) or [www.sedar.com](http://www.sedar.com).

The investments and percentages may have changed since March 31, 2023, due to the ongoing portfolio transactions of the Fund. Quarterly updates of holdings are available within 60 days of the end of each quarter except for March 31, the Fund's fiscal year-end, when they are available within 90 days.

# SYMMETRY MODERATE GROWTH PORTFOLIO

ANNUAL MANAGEMENT REPORT OF FUND PERFORMANCE | For the Year Ended March 31, 2023

## Financial Highlights

The following tables show selected key financial information about the Fund and are intended to help you understand the Fund's financial performance for each of the fiscal periods presented below. If during the period a fund or series was established or reinstated, "period" represents the period from inception or reinstatement to the end of that fiscal period. Series inception or reinstatement dates can be found under *Fund Formation and Series Information*.

### THE FUND'S NET ASSETS PER SECURITY (\$)¹

	Mar. 31 2023	Mar. 31 2022	Mar. 31 2021	Mar. 31 2020	Mar. 31 2019
<b>Series A</b>					
<b>Net assets, beginning of period</b>	17.51	17.85	15.43	17.16	17.29
<b>Increase (decrease) from operations:</b>					
Total revenue	0.39	0.65	0.97	0.78	0.51
Total expenses	(0.37)	(0.42)	(0.40)	(0.40)	(0.39)
Realized gains (losses) for the period	(0.18)	0.59	0.68	0.61	0.36
Unrealized gains (losses) for the period	(0.85)	(0.16)	2.06	(1.82)	(0.35)
<b>Total increase (decrease) from operations²</b>	(1.01)	0.66	3.31	(0.83)	0.13
<b>Distributions:</b>					
From net investment income (excluding Canadian dividends)	–	(0.20)	(0.26)	(0.30)	(0.05)
From Canadian dividends	–	(0.45)	(0.39)	(0.16)	(0.09)
From capital gains	–	(0.33)	(0.17)	(0.33)	(0.11)
Return of capital	–	–	–	–	–
<b>Total annual distributions³</b>	–	(0.98)	(0.82)	(0.79)	(0.25)
<b>Net assets, end of period</b>	16.59	17.51	17.85	15.43	17.16
<b>Series AR</b>					
<b>Net assets, beginning of period</b>	13.72	13.99	12.09	13.45	13.55
<b>Increase (decrease) from operations:</b>					
Total revenue	0.31	0.51	0.76	0.61	0.40
Total expenses	(0.29)	(0.33)	(0.31)	(0.31)	(0.30)
Realized gains (losses) for the period	(0.04)	0.41	0.44	0.27	0.31
Unrealized gains (losses) for the period	(0.67)	(0.13)	1.61	(1.43)	(0.27)
<b>Total increase (decrease) from operations²</b>	(0.69)	0.46	2.50	(0.86)	0.14
<b>Distributions:</b>					
From net investment income (excluding Canadian dividends)	–	(0.16)	(0.20)	(0.24)	(0.04)
From Canadian dividends	–	(0.35)	(0.31)	(0.12)	(0.07)
From capital gains	–	(0.26)	(0.13)	(0.26)	(0.08)
Return of capital	–	–	–	–	–
<b>Total annual distributions³</b>	–	(0.77)	(0.64)	(0.62)	(0.19)
<b>Net assets, end of period</b>	13.01	13.72	13.99	12.09	13.45

	Mar. 31 2023	Mar. 31 2022	Mar. 31 2021	Mar. 31 2020	Mar. 31 2019
<b>Series B</b>					
<b>Net assets, beginning of period</b>	12.05	12.29	10.62	11.81	11.90
<b>Increase (decrease) from operations:</b>					
Total revenue	0.27	0.45	0.67	0.53	0.35
Total expenses	(0.25)	(0.29)	(0.27)	(0.27)	(0.28)
Realized gains (losses) for the period	(0.15)	0.43	0.46	0.43	0.24
Unrealized gains (losses) for the period	(0.59)	(0.11)	1.42	(1.25)	(0.24)
<b>Total increase (decrease) from operations²</b>	(0.72)	0.48	2.28	(0.56)	0.07
<b>Distributions:</b>					
From net investment income (excluding Canadian dividends)	–	(0.14)	(0.18)	(0.20)	(0.03)
From Canadian dividends	–	(0.31)	(0.27)	(0.11)	(0.05)
From capital gains	–	(0.22)	(0.11)	(0.23)	(0.07)
Return of capital	–	–	–	–	–
<b>Total annual distributions³</b>	–	(0.67)	(0.56)	(0.54)	(0.15)
<b>Net assets, end of period</b>	11.43	12.05	12.29	10.62	11.81
<b>Series C</b>					
<b>Net assets, beginning of period</b>	12.13	12.36	10.68	11.88	11.98
<b>Increase (decrease) from operations:</b>					
Total revenue	0.27	0.45	0.67	0.53	0.35
Total expenses	(0.28)	(0.32)	(0.29)	(0.30)	(0.29)
Realized gains (losses) for the period	(0.14)	(0.18)	0.41	0.72	0.25
Unrealized gains (losses) for the period	(0.59)	(0.11)	1.42	(1.25)	(0.24)
<b>Total increase (decrease) from operations²</b>	(0.74)	(0.16)	2.21	(0.30)	0.07
<b>Distributions:</b>					
From net investment income (excluding Canadian dividends)	–	(0.14)	(0.17)	(0.20)	(0.04)
From Canadian dividends	–	(0.30)	(0.26)	(0.11)	(0.05)
From capital gains	–	(0.21)	(0.12)	(0.22)	(0.07)
Return of capital	–	–	–	–	–
<b>Total annual distributions³</b>	–	(0.65)	(0.55)	(0.53)	(0.16)
<b>Net assets, end of period</b>	11.47	12.13	12.36	10.68	11.88

(1) These calculations are prescribed by securities regulations and are not intended to be a reconciliation between opening and closing net assets per security. This information is derived from the Fund's audited annual financial statements. The net assets per security presented in the financial statements may differ from the net asset value per security calculated for fund pricing purposes. An explanation of these differences, if any, can be found in the *Notes to Financial Statements*.

(2) Net assets and distributions are based on the actual number of securities outstanding at the relevant time. The increase/decrease from operations is based on the weighted average number of securities outstanding over the fiscal period.

(3) Distributions were paid in cash/reinvested in additional securities of the Fund, or both.

# SYMMETRY MODERATE GROWTH PORTFOLIO

ANNUAL MANAGEMENT REPORT OF FUND PERFORMANCE | For the Year Ended March 31, 2023

## THE FUND'S NET ASSETS PER SECURITY (\$)¹ (cont'd)

Series D	Mar. 31 2023	Mar. 31 2022	Mar. 31 2021	Mar. 31 2020	Mar. 31 2019
<b>Net assets, beginning of period</b>	11.54	11.76	10.17	11.32	11.37
<b>Increase (decrease) from operations:</b>					
Total revenue	0.26	0.43	0.64	0.51	0.33
Total expenses	(0.12)	(0.17)	(0.16)	(0.16)	(0.16)
Realized gains (losses) for the period	0.21	0.37	0.45	0.31	0.21
Unrealized gains (losses) for the period	(0.57)	(0.11)	1.36	(1.20)	(0.23)
<b>Total increase (decrease) from operations²</b>	<b>(0.22)</b>	<b>0.52</b>	<b>2.29</b>	<b>(0.54)</b>	<b>0.15</b>
<b>Distributions:</b>					
From net investment income (excluding Canadian dividends)	–	(0.16)	(0.20)	(0.23)	(0.05)
From Canadian dividends	–	(0.35)	(0.31)	(0.13)	(0.08)
From capital gains	–	(0.24)	(0.14)	(0.27)	(0.10)
Return of capital	–	–	–	–	–
<b>Total annual distributions³</b>	<b>–</b>	<b>(0.75)</b>	<b>(0.65)</b>	<b>(0.63)</b>	<b>(0.23)</b>
<b>Net assets, end of period</b>	<b>11.07</b>	<b>11.54</b>	<b>11.76</b>	<b>10.17</b>	<b>11.32</b>
<b>Series DZ</b>	<b>Mar. 31 2023</b>	<b>Mar. 31 2022</b>	<b>Mar. 31 2021</b>	<b>Mar. 31 2020</b>	<b>Mar. 31 2019</b>
<b>Net assets, beginning of period</b>	12.45	12.69	10.97	12.20	12.29
<b>Increase (decrease) from operations:</b>					
Total revenue	0.28	0.46	0.69	0.55	0.36
Total expenses	(0.26)	(0.30)	(0.28)	(0.28)	(0.28)
Realized gains (losses) for the period	(0.15)	0.41	0.46	0.40	0.25
Unrealized gains (losses) for the period	(0.61)	(0.12)	1.46	(1.29)	(0.25)
<b>Total increase (decrease) from operations²</b>	<b>(0.74)</b>	<b>0.45</b>	<b>2.33</b>	<b>(0.62)</b>	<b>0.08</b>
<b>Distributions:</b>					
From net investment income (excluding Canadian dividends)	–	(0.15)	(0.18)	(0.21)	(0.04)
From Canadian dividends	–	(0.32)	(0.28)	(0.11)	(0.06)
From capital gains	–	(0.23)	(0.12)	(0.24)	(0.08)
Return of capital	–	–	–	–	–
<b>Total annual distributions³</b>	<b>–</b>	<b>(0.70)</b>	<b>(0.58)</b>	<b>(0.56)</b>	<b>(0.18)</b>
<b>Net assets, end of period</b>	<b>11.80</b>	<b>12.45</b>	<b>12.69</b>	<b>10.97</b>	<b>12.20</b>
<b>Series F</b>	<b>Mar. 31 2023</b>	<b>Mar. 31 2022</b>	<b>Mar. 31 2021</b>	<b>Mar. 31 2020</b>	<b>Mar. 31 2019</b>
<b>Net assets, beginning of period</b>	17.40	17.71	15.32	17.03	17.09
<b>Increase (decrease) from operations:</b>					
Total revenue	0.39	0.64	0.97	0.77	0.50
Total expenses	(0.15)	(0.17)	(0.17)	(0.16)	(0.16)
Realized gains (losses) for the period	(0.25)	0.06	0.62	0.46	0.26
Unrealized gains (losses) for the period	(0.85)	(0.16)	2.05	(1.82)	(0.34)
<b>Total increase (decrease) from operations²</b>	<b>(0.86)</b>	<b>0.37</b>	<b>3.47</b>	<b>(0.75)</b>	<b>0.26</b>
<b>Distributions:</b>					
From net investment income (excluding Canadian dividends)	–	(0.26)	(0.33)	(0.39)	(0.09)
From Canadian dividends	–	(0.57)	(0.51)	(0.20)	(0.13)
From capital gains	–	(0.38)	(0.22)	(0.43)	(0.17)
Return of capital	–	–	–	–	–
<b>Total annual distributions³</b>	<b>–</b>	<b>(1.21)</b>	<b>(1.06)</b>	<b>(1.02)</b>	<b>(0.39)</b>
<b>Net assets, end of period</b>	<b>16.71</b>	<b>17.40</b>	<b>17.71</b>	<b>15.32</b>	<b>17.03</b>

Series F5	Mar. 31 2023	Mar. 31 2022	Mar. 31 2021	Mar. 31 2020	Mar. 31 2019
<b>Net assets, beginning of period</b>	11.52	12.06	10.68	12.23	12.84
<b>Increase (decrease) from operations:</b>					
Total revenue	0.25	0.43	0.66	0.55	0.37
Total expenses	(0.10)	(0.11)	(0.11)	(0.12)	(0.11)
Realized gains (losses) for the period	(0.02)	(0.04)	0.32	0.19	0.19
Unrealized gains (losses) for the period	(0.55)	(0.11)	1.40	(1.28)	(0.25)
<b>Total increase (decrease) from operations²</b>	<b>(0.42)</b>	<b>0.17</b>	<b>2.27</b>	<b>(0.66)</b>	<b>0.20</b>
<b>Distributions:</b>					
From net investment income (excluding Canadian dividends)	(0.02)	(0.13)	(0.12)	(0.22)	(0.04)
From Canadian dividends	(0.07)	(0.43)	(0.50)	(0.33)	(0.25)
From capital gains	–	(0.21)	(0.09)	(0.20)	(0.05)
Return of capital	(0.50)	(0.38)	(0.28)	(0.31)	(0.52)
<b>Total annual distributions³</b>	<b>(0.59)</b>	<b>(1.15)</b>	<b>(0.99)</b>	<b>(1.06)</b>	<b>(0.86)</b>
<b>Net assets, end of period</b>	<b>10.46</b>	<b>11.52</b>	<b>12.06</b>	<b>10.68</b>	<b>12.23</b>

Series F8	Mar. 31 2023	Mar. 31 2022	Mar. 31 2021	Mar. 31 2020	Mar. 31 2019
<b>Net assets, beginning of period</b>	9.65	10.41	9.51	11.22	12.07
<b>Increase (decrease) from operations:</b>					
Total revenue	0.21	0.36	0.58	0.50	0.34
Total expenses	(0.08)	(0.10)	(0.10)	(0.11)	(0.11)
Realized gains (losses) for the period	(0.39)	(0.40)	0.35	0.39	(0.04)
Unrealized gains (losses) for the period	(0.45)	(0.09)	1.23	(1.16)	(0.23)
<b>Total increase (decrease) from operations²</b>	<b>(0.71)</b>	<b>(0.23)</b>	<b>2.06</b>	<b>(0.38)</b>	<b>(0.04)</b>
<b>Distributions:</b>					
From net investment income (excluding Canadian dividends)	(0.01)	(0.11)	(0.11)	(0.21)	(0.03)
From Canadian dividends	(0.05)	(0.37)	(0.44)	(0.29)	(0.23)
From capital gains	–	(0.18)	(0.07)	(0.18)	(0.05)
Return of capital	(0.73)	(0.64)	(0.58)	(0.61)	(0.76)
<b>Total annual distributions³</b>	<b>(0.79)</b>	<b>(1.30)</b>	<b>(1.20)</b>	<b>(1.29)</b>	<b>(1.07)</b>
<b>Net assets, end of period</b>	<b>8.45</b>	<b>9.65</b>	<b>10.41</b>	<b>9.51</b>	<b>11.22</b>

Series FB	Mar. 31 2023	Mar. 31 2022	Mar. 31 2021	Mar. 31 2020	Mar. 31 2019
<b>Net assets, beginning of period</b>	10.76	10.98	9.49	10.58	10.63
<b>Increase (decrease) from operations:</b>					
Total revenue	0.24	0.40	0.60	0.48	0.31
Total expenses	(0.11)	(0.13)	(0.13)	(0.13)	(0.12)
Realized gains (losses) for the period	(0.10)	0.36	0.26	0.37	0.29
Unrealized gains (losses) for the period	(0.53)	(0.10)	1.27	(1.12)	(0.21)
<b>Total increase (decrease) from operations²</b>	<b>(0.50)</b>	<b>0.53</b>	<b>2.00</b>	<b>(0.40)</b>	<b>0.27</b>
<b>Distributions:</b>					
From net investment income (excluding Canadian dividends)	–	(0.16)	(0.20)	(0.24)	(0.05)
From Canadian dividends	–	(0.35)	(0.31)	(0.13)	(0.08)
From capital gains	–	(0.23)	(0.12)	(0.27)	(0.10)
Return of capital	–	–	–	–	–
<b>Total annual distributions³</b>	<b>–</b>	<b>(0.74)</b>	<b>(0.63)</b>	<b>(0.64)</b>	<b>(0.23)</b>
<b>Net assets, end of period</b>	<b>10.31</b>	<b>10.76</b>	<b>10.98</b>	<b>9.49</b>	<b>10.58</b>

# SYMMETRY MODERATE GROWTH PORTFOLIO

ANNUAL MANAGEMENT REPORT OF FUND PERFORMANCE | For the Year Ended March 31, 2023

## THE FUND'S NET ASSETS PER SECURITY (\$)¹ (cont'd)

	Mar. 31 2023	Mar. 31 2022	Mar. 31 2021	Mar. 31 2020	Mar. 31 2019
<b>Series FB5</b>					
<b>Net assets, beginning of period</b>	12.71	13.33	11.82	13.56	14.16
<b>Increase (decrease) from operations:</b>					
Total revenue	0.28	0.48	0.74	0.62	0.41
Total expenses	(0.11)	(0.16)	(0.14)	(0.15)	(0.18)
Realized gains (losses) for the period	(0.05)	(0.04)	1.14	(0.46)	0.30
Unrealized gains (losses) for the period	(0.61)	(0.12)	1.56	(1.46)	(0.28)
<b>Total increase (decrease) from operations²</b>	<b>(0.49)</b>	<b>0.16</b>	<b>3.30</b>	<b>(1.45)</b>	<b>0.25</b>
<b>Distributions:</b>					
From net investment income (excluding Canadian dividends)	(0.01)	(0.14)	(0.14)	(0.25)	(0.03)
From Canadian dividends	(0.06)	(0.46)	(0.54)	(0.32)	(0.23)
From capital gains	–	(0.23)	(0.08)	(0.22)	(0.06)
Return of capital	(0.58)	(0.44)	(0.34)	(0.39)	(0.51)
<b>Total annual distributions³</b>	<b>(0.65)</b>	<b>(1.27)</b>	<b>(1.10)</b>	<b>(1.18)</b>	<b>(0.83)</b>
<b>Net assets, end of period</b>	<b>11.52</b>	<b>12.71</b>	<b>13.33</b>	<b>11.82</b>	<b>13.56</b>
<b>Series FR</b>					
<b>Net assets, beginning of period</b>	10.00	n/a	n/a	n/a	n/a
<b>Increase (decrease) from operations:</b>					
Total revenue	0.14	n/a	n/a	n/a	n/a
Total expenses	(0.06)	n/a	n/a	n/a	n/a
Realized gains (losses) for the period	0.88	n/a	n/a	n/a	n/a
Unrealized gains (losses) for the period	(0.31)	n/a	n/a	n/a	n/a
<b>Total increase (decrease) from operations²</b>	<b>0.65</b>	<b>n/a</b>	<b>n/a</b>	<b>n/a</b>	<b>n/a</b>
<b>Distributions:</b>					
From net investment income (excluding Canadian dividends)	–	n/a	n/a	n/a	n/a
From Canadian dividends	–	n/a	n/a	n/a	n/a
From capital gains	–	n/a	n/a	n/a	n/a
Return of capital	–	n/a	n/a	n/a	n/a
<b>Total annual distributions³</b>	<b>–</b>	<b>n/a</b>	<b>n/a</b>	<b>n/a</b>	<b>n/a</b>
<b>Net assets, end of period</b>	<b>10.91</b>	<b>n/a</b>	<b>n/a</b>	<b>n/a</b>	<b>n/a</b>
<b>Series G</b>					
<b>Net assets, beginning of period</b>	15.42	15.72	13.59	15.11	15.20
<b>Increase (decrease) from operations:</b>					
Total revenue	0.35	0.57	0.86	0.69	0.45
Total expenses	(0.24)	(0.27)	(0.26)	(0.25)	(0.25)
Realized gains (losses) for the period	(0.05)	0.48	0.46	0.41	0.34
Unrealized gains (losses) for the period	(0.75)	(0.15)	1.82	(1.61)	(0.30)
<b>Total increase (decrease) from operations²</b>	<b>(0.69)</b>	<b>0.63</b>	<b>2.88</b>	<b>(0.76)</b>	<b>0.24</b>
<b>Distributions:</b>					
From net investment income (excluding Canadian dividends)	–	(0.20)	(0.26)	(0.30)	(0.06)
From Canadian dividends	–	(0.45)	(0.40)	(0.16)	(0.10)
From capital gains	–	(0.31)	(0.17)	(0.33)	(0.12)
Return of capital	–	–	–	–	–
<b>Total annual distributions³</b>	<b>–</b>	<b>(0.96)</b>	<b>(0.83)</b>	<b>(0.79)</b>	<b>(0.28)</b>
<b>Net assets, end of period</b>	<b>14.71</b>	<b>15.42</b>	<b>15.72</b>	<b>13.59</b>	<b>15.11</b>

	Mar. 31 2023	Mar. 31 2022	Mar. 31 2021	Mar. 31 2020	Mar. 31 2019
<b>Series J</b>					
<b>Net assets, beginning of period</b>	13.58	13.84	11.95	13.29	13.37
<b>Increase (decrease) from operations:</b>					
Total revenue	0.31	0.50	0.75	0.60	0.39
Total expenses	(0.20)	(0.31)	(0.22)	(0.26)	(0.26)
Realized gains (losses) for the period	(0.07)	0.41	0.44	1.25	0.29
Unrealized gains (losses) for the period	(0.66)	(0.13)	1.60	(1.40)	(0.27)
<b>Total increase (decrease) from operations²</b>	<b>(0.62)</b>	<b>0.47</b>	<b>2.57</b>	<b>0.19</b>	<b>0.15</b>
<b>Distributions:</b>					
From net investment income (excluding Canadian dividends)	–	(0.16)	(0.22)	(0.24)	(0.06)
From Canadian dividends	–	(0.35)	(0.34)	(0.13)	(0.07)
From capital gains	–	(0.26)	(0.15)	(0.28)	(0.09)
Return of capital	–	–	–	–	–
<b>Total annual distributions³</b>	<b>–</b>	<b>(0.77)</b>	<b>(0.71)</b>	<b>(0.65)</b>	<b>(0.22)</b>
<b>Net assets, end of period</b>	<b>12.96</b>	<b>13.58</b>	<b>13.84</b>	<b>11.95</b>	<b>13.29</b>
<b>Series O</b>					
<b>Net assets, beginning of period</b>	13.63	13.84	11.98	13.31	13.38
<b>Increase (decrease) from operations:</b>					
Total revenue	0.31	0.50	0.76	0.61	0.39
Total expenses	–	–	–	–	–
Realized gains (losses) for the period	(0.10)	(0.21)	0.46	0.33	0.30
Unrealized gains (losses) for the period	(0.67)	(0.13)	1.61	(1.42)	(0.27)
<b>Total increase (decrease) from operations²</b>	<b>(0.46)</b>	<b>0.16</b>	<b>2.83</b>	<b>(0.48)</b>	<b>0.42</b>
<b>Distributions:</b>					
From net investment income (excluding Canadian dividends)	–	(0.23)	(0.30)	(0.36)	(0.10)
From Canadian dividends	–	(0.52)	(0.47)	(0.18)	(0.15)
From capital gains	–	(0.33)	(0.20)	(0.39)	(0.19)
Return of capital	–	–	–	–	–
<b>Total annual distributions³</b>	<b>–</b>	<b>(1.08)</b>	<b>(0.97)</b>	<b>(0.93)</b>	<b>(0.44)</b>
<b>Net assets, end of period</b>	<b>13.21</b>	<b>13.63</b>	<b>13.84</b>	<b>11.98</b>	<b>13.31</b>
<b>Series O5</b>					
<b>Net assets, beginning of period</b>	13.63	14.10	12.37	14.04	14.62
<b>Increase (decrease) from operations:</b>					
Total revenue	0.30	0.50	0.78	0.63	0.41
Total expenses	–	–	–	–	–
Realized gains (losses) for the period	(1.85)	(0.44)	3.66	0.37	1.51
Unrealized gains (losses) for the period	(0.65)	(0.13)	1.65	(1.48)	(0.28)
<b>Total increase (decrease) from operations²</b>	<b>(2.20)</b>	<b>(0.07)</b>	<b>6.09</b>	<b>(0.48)</b>	<b>1.64</b>
<b>Distributions:</b>					
From net investment income (excluding Canadian dividends)	(0.04)	(0.17)	(0.15)	(0.28)	(0.05)
From Canadian dividends	(0.12)	(0.62)	(0.71)	(0.53)	(0.45)
From capital gains	–	(0.26)	(0.09)	(0.24)	(0.07)
Return of capital	(0.54)	(0.33)	(0.21)	(0.19)	(0.41)
<b>Total annual distributions³</b>	<b>(0.70)</b>	<b>(1.38)</b>	<b>(1.16)</b>	<b>(1.24)</b>	<b>(0.98)</b>
<b>Net assets, end of period</b>	<b>12.49</b>	<b>13.63</b>	<b>14.10</b>	<b>12.37</b>	<b>14.04</b>

# SYMMETRY MODERATE GROWTH PORTFOLIO

ANNUAL MANAGEMENT REPORT OF FUND PERFORMANCE | For the Year Ended March 31, 2023

## THE FUND'S NET ASSETS PER SECURITY (\$)¹ (cont'd)

	Mar. 31 2023	Mar. 31 2022	Mar. 31 2021	Mar. 31 2020	Mar. 31 2019
<b>Series PW</b>					
<b>Net assets, beginning of period</b>	11.93	12.15	10.51	11.68	11.76
<b>Increase (decrease) from operations:</b>					
Total revenue	0.27	0.44	0.66	0.53	0.34
Total expenses	(0.23)	(0.26)	(0.24)	(0.24)	(0.24)
Realized gains (losses) for the period	(0.09)	0.23	0.39	0.28	0.22
Unrealized gains (losses) for the period	(0.58)	(0.11)	1.40	(1.24)	(0.23)
<b>Total increase (decrease) from operations²</b>	<b>(0.63)</b>	<b>0.30</b>	<b>2.21</b>	<b>(0.67)</b>	<b>0.09</b>
<b>Distributions:</b>					
From net investment income (excluding Canadian dividends)	–	(0.15)	(0.18)	(0.21)	(0.04)
From Canadian dividends	–	(0.32)	(0.28)	(0.11)	(0.06)
From capital gains	–	(0.22)	(0.13)	(0.24)	(0.08)
Return of capital	–	–	–	–	–
<b>Total annual distributions³</b>	<b>–</b>	<b>(0.69)</b>	<b>(0.59)</b>	<b>(0.56)</b>	<b>(0.18)</b>
<b>Net assets, end of period</b>	<b>11.33</b>	<b>11.93</b>	<b>12.15</b>	<b>10.51</b>	<b>11.68</b>
<b>Series PWFB</b>					
<b>Net assets, beginning of period</b>	10.39	10.58	9.15	10.17	10.21
<b>Increase (decrease) from operations:</b>					
Total revenue	0.24	0.38	0.58	0.46	0.30
Total expenses	(0.09)	(0.10)	(0.10)	(0.10)	(0.10)
Realized gains (losses) for the period	(0.13)	0.03	0.29	0.23	0.27
Unrealized gains (losses) for the period	(0.51)	(0.10)	1.23	(1.09)	(0.20)
<b>Total increase (decrease) from operations²</b>	<b>(0.49)</b>	<b>0.21</b>	<b>2.00</b>	<b>(0.50)</b>	<b>0.27</b>
<b>Distributions:</b>					
From net investment income (excluding Canadian dividends)	–	(0.15)	(0.20)	(0.23)	(0.06)
From Canadian dividends	–	(0.34)	(0.31)	(0.12)	(0.08)
From capital gains	–	(0.23)	(0.13)	(0.25)	(0.10)
Return of capital	–	–	–	–	–
<b>Total annual distributions³</b>	<b>–</b>	<b>(0.72)</b>	<b>(0.64)</b>	<b>(0.60)</b>	<b>(0.24)</b>
<b>Net assets, end of period</b>	<b>9.98</b>	<b>10.39</b>	<b>10.58</b>	<b>9.15</b>	<b>10.17</b>
<b>Series PWFB5</b>					
<b>Net assets, beginning of period</b>	13.36	13.96	12.34	14.09	14.64
<b>Increase (decrease) from operations:</b>					
Total revenue	0.29	0.50	0.77	0.63	0.42
Total expenses	(0.11)	(0.13)	(0.10)	(0.10)	(0.10)
Realized gains (losses) for the period	(0.29)	(0.64)	0.44	0.35	0.31
Unrealized gains (losses) for the period	(0.63)	(0.13)	1.62	(1.48)	(0.29)
<b>Total increase (decrease) from operations²</b>	<b>(0.74)</b>	<b>(0.40)</b>	<b>2.73</b>	<b>(0.60)</b>	<b>0.34</b>
<b>Distributions:</b>					
From net investment income (excluding Canadian dividends)	(0.02)	(0.15)	(0.14)	(0.26)	(0.05)
From Canadian dividends	(0.08)	(0.51)	(0.61)	(0.44)	(0.34)
From capital gains	–	(0.24)	(0.10)	(0.24)	(0.06)
Return of capital	(0.58)	(0.44)	(0.30)	(0.29)	(0.42)
<b>Total annual distributions³</b>	<b>(0.68)</b>	<b>(1.34)</b>	<b>(1.15)</b>	<b>(1.23)</b>	<b>(0.87)</b>
<b>Net assets, end of period</b>	<b>12.12</b>	<b>13.36</b>	<b>13.96</b>	<b>12.34</b>	<b>14.09</b>

	Mar. 31 2023	Mar. 31 2022	Mar. 31 2021	Mar. 31 2020	Mar. 31 2019
<b>Series PWR</b>					
<b>Net assets, beginning of period</b>	10.19	10.38	8.98	10.00	n/a
<b>Increase (decrease) from operations:</b>					
Total revenue	0.23	0.38	0.57	0.46	n/a
Total expenses	(0.19)	(0.22)	(0.21)	(0.20)	n/a
Realized gains (losses) for the period	0.06	0.13	0.11	(0.24)	n/a
Unrealized gains (losses) for the period	(0.50)	(0.10)	1.21	(1.08)	n/a
<b>Total increase (decrease) from operations²</b>	<b>(0.40)</b>	<b>0.19</b>	<b>1.68</b>	<b>(1.06)</b>	<b>n/a</b>
<b>Distributions:</b>					
From net investment income (excluding Canadian dividends)	–	(0.12)	(0.16)	(0.18)	n/a
From Canadian dividends	–	(0.28)	(0.24)	(0.09)	n/a
From capital gains	–	(0.19)	(0.10)	(0.20)	n/a
Return of capital	–	–	–	–	n/a
<b>Total annual distributions³</b>	<b>–</b>	<b>(0.59)</b>	<b>(0.50)</b>	<b>(0.47)</b>	<b>n/a</b>
<b>Net assets, end of period</b>	<b>9.68</b>	<b>10.19</b>	<b>10.38</b>	<b>8.98</b>	<b>n/a</b>
<b>Series PWT5</b>					
<b>Net assets, beginning of period</b>	12.35	13.05	11.67	13.49	14.31
<b>Increase (decrease) from operations:</b>					
Total revenue	0.27	0.46	0.72	0.60	0.41
Total expenses	(0.22)	(0.27)	(0.26)	(0.27)	(0.28)
Realized gains (losses) for the period	(0.09)	(0.18)	0.35	0.25	0.22
Unrealized gains (losses) for the period	(0.58)	(0.12)	1.53	(1.42)	(0.28)
<b>Total increase (decrease) from operations²</b>	<b>(0.62)</b>	<b>(0.11)</b>	<b>2.34</b>	<b>(0.84)</b>	<b>0.07</b>
<b>Distributions:</b>					
From net investment income (excluding Canadian dividends)	(0.01)	(0.12)	(0.13)	(0.23)	(0.03)
From Canadian dividends	(0.03)	(0.37)	(0.42)	(0.23)	(0.15)
From capital gains	–	(0.22)	(0.09)	(0.21)	(0.05)
Return of capital	(0.59)	(0.51)	(0.43)	(0.48)	(0.71)
<b>Total annual distributions³</b>	<b>(0.63)</b>	<b>(1.22)</b>	<b>(1.07)</b>	<b>(1.15)</b>	<b>(0.94)</b>
<b>Net assets, end of period</b>	<b>11.08</b>	<b>12.35</b>	<b>13.05</b>	<b>11.67</b>	<b>13.49</b>
<b>Series PWT8</b>					
<b>Net assets, beginning of period</b>	10.76	11.72	10.81	12.90	14.02
<b>Increase (decrease) from operations:</b>					
Total revenue	0.23	0.41	0.66	0.57	0.40
Total expenses	(0.19)	(0.23)	(0.23)	(0.25)	(0.28)
Realized gains (losses) for the period	(0.13)	(0.48)	0.48	0.36	(0.07)
Unrealized gains (losses) for the period	(0.50)	(0.10)	1.39	(1.33)	(0.27)
<b>Total increase (decrease) from operations²</b>	<b>(0.59)</b>	<b>(0.40)</b>	<b>2.30</b>	<b>(0.65)</b>	<b>(0.22)</b>
<b>Distributions:</b>					
From net investment income (excluding Canadian dividends)	–	(0.11)	(0.12)	(0.22)	(0.04)
From Canadian dividends	(0.02)	(0.33)	(0.39)	(0.22)	(0.14)
From capital gains	–	(0.19)	(0.07)	(0.20)	(0.05)
Return of capital	(0.86)	(0.81)	(0.77)	(0.83)	(1.00)
<b>Total annual distributions³</b>	<b>(0.88)</b>	<b>(1.44)</b>	<b>(1.35)</b>	<b>(1.47)</b>	<b>(1.23)</b>
<b>Net assets, end of period</b>	<b>9.31</b>	<b>10.76</b>	<b>11.72</b>	<b>10.81</b>	<b>12.90</b>

# SYMMETRY MODERATE GROWTH PORTFOLIO

ANNUAL MANAGEMENT REPORT OF FUND PERFORMANCE | For the Year Ended March 31, 2023

## THE FUND'S NET ASSETS PER SECURITY (\$)¹ (cont'd)

	Mar. 31 2023	Mar. 31 2022	Mar. 31 2021	Mar. 31 2020	Mar. 31 2019
<b>Series PWX</b>					
<b>Net assets, beginning of period</b>	11.93	12.14	10.51	11.67	11.73
<b>Increase (decrease) from operations:</b>					
Total revenue	0.27	0.44	0.66	0.53	0.35
Total expenses	–	–	–	–	–
Realized gains (losses) for the period	(0.10)	0.25	0.37	0.27	0.22
Unrealized gains (losses) for the period	(0.59)	(0.11)	1.41	(1.25)	(0.24)
<b>Total increase (decrease) from operations²</b>	<b>(0.42)</b>	<b>0.58</b>	<b>2.44</b>	<b>(0.45)</b>	<b>0.33</b>
<b>Distributions:</b>					
From net investment income (excluding Canadian dividends)	–	(0.20)	(0.27)	(0.30)	(0.09)
From Canadian dividends	–	(0.45)	(0.41)	(0.16)	(0.13)
From capital gains	–	(0.30)	(0.17)	(0.34)	(0.17)
Return of capital	–	–	–	–	–
<b>Total annual distributions³</b>	<b>–</b>	<b>(0.95)</b>	<b>(0.85)</b>	<b>(0.80)</b>	<b>(0.39)</b>
<b>Net assets, end of period</b>	<b>11.56</b>	<b>11.93</b>	<b>12.14</b>	<b>10.51</b>	<b>11.67</b>
<b>Series PWX8</b>					
<b>Net assets, beginning of period</b>	13.49	14.46	13.10	15.32	15.00
<b>Increase (decrease) from operations:</b>					
Total revenue	0.29	0.51	0.80	0.68	0.20
Total expenses	–	–	–	–	–
Realized gains (losses) for the period	(0.06)	0.40	0.47	0.36	0.92
Unrealized gains (losses) for the period	(0.63)	(0.13)	1.70	(1.59)	(0.13)
<b>Total increase (decrease) from operations²</b>	<b>(0.40)</b>	<b>0.78</b>	<b>2.97</b>	<b>(0.55)</b>	<b>0.99</b>
<b>Distributions:</b>					
From net investment income (excluding Canadian dividends)	(0.04)	(0.17)	(0.15)	(0.31)	(0.04)
From Canadian dividends	(0.12)	(0.63)	(0.74)	(0.64)	(0.17)
From capital gains	–	(0.26)	(0.10)	(0.25)	(0.07)
Return of capital	(0.94)	(0.78)	(0.67)	(0.58)	(0.38)
<b>Total annual distributions³</b>	<b>(1.10)</b>	<b>(1.84)</b>	<b>(1.66)</b>	<b>(1.78)</b>	<b>(0.66)</b>
<b>Net assets, end of period</b>	<b>11.92</b>	<b>13.49</b>	<b>14.46</b>	<b>13.10</b>	<b>15.32</b>
<b>Series R</b>					
<b>Net assets, beginning of period</b>	n/a	n/a	9.78	11.02	11.15
<b>Increase (decrease) from operations:</b>					
Total revenue	n/a	n/a	0.61	0.50	0.32
Total expenses	n/a	n/a	–	–	–
Realized gains (losses) for the period	n/a	n/a	0.49	0.33	0.23
Unrealized gains (losses) for the period	n/a	n/a	1.30	(1.16)	(0.22)
<b>Total increase (decrease) from operations²</b>	<b>n/a</b>	<b>n/a</b>	<b>2.40</b>	<b>(0.33)</b>	<b>0.33</b>
<b>Distributions:</b>					
From net investment income (excluding Canadian dividends)	n/a	n/a	(0.12)	(0.22)	(0.05)
From Canadian dividends	n/a	n/a	(0.57)	(0.48)	(0.36)
From capital gains	n/a	n/a	(0.08)	(0.19)	(0.05)
Return of capital	n/a	n/a	–	–	–
<b>Total annual distributions³</b>	<b>n/a</b>	<b>n/a</b>	<b>(0.77)</b>	<b>(0.89)</b>	<b>(0.46)</b>
<b>Net assets, end of period</b>	<b>n/a</b>	<b>n/a</b>	<b>11.31</b>	<b>9.78</b>	<b>11.02</b>

	Mar. 31 2023	Mar. 31 2022	Mar. 31 2021	Mar. 31 2020	Mar. 31 2019
<b>Series S</b>					
<b>Net assets, beginning of period</b>	13.25	13.46	11.64	13.10	13.25
<b>Increase (decrease) from operations:</b>					
Total revenue	0.30	0.49	0.73	0.59	0.39
Total expenses	–	–	(0.01)	(0.01)	(0.01)
Realized gains (losses) for the period	(0.01)	0.34	0.39	0.31	0.71
Unrealized gains (losses) for the period	(0.65)	(0.12)	1.55	(1.39)	(0.26)
<b>Total increase (decrease) from operations²</b>	<b>(0.36)</b>	<b>0.71</b>	<b>2.66</b>	<b>(0.50)</b>	<b>0.83</b>
<b>Distributions:</b>					
From net investment income (excluding Canadian dividends)	(0.04)	(0.16)	(0.14)	(0.27)	(0.06)
From Canadian dividends	(0.15)	(0.59)	(0.67)	(0.56)	(0.42)
From capital gains	–	(0.25)	(0.09)	(0.22)	(0.06)
Return of capital	–	–	–	–	–
<b>Total annual distributions³</b>	<b>(0.19)</b>	<b>(1.00)</b>	<b>(0.90)</b>	<b>(1.05)</b>	<b>(0.54)</b>
<b>Net assets, end of period</b>	<b>12.65</b>	<b>13.25</b>	<b>13.46</b>	<b>11.64</b>	<b>13.10</b>
<b>Series T5</b>					
<b>Net assets, beginning of period</b>	11.31	11.98	10.73	12.45	13.24
<b>Increase (decrease) from operations:</b>					
Total revenue	0.25	0.43	0.66	0.55	0.38
Total expenses	(0.23)	(0.28)	(0.27)	(0.28)	(0.29)
Realized gains (losses) for the period	0.03	0.01	0.59	0.54	0.19
Unrealized gains (losses) for the period	(0.54)	(0.11)	1.40	(1.28)	(0.26)
<b>Total increase (decrease) from operations²</b>	<b>(0.49)</b>	<b>0.05</b>	<b>2.38</b>	<b>(0.47)</b>	<b>0.02</b>
<b>Distributions:</b>					
From net investment income (excluding Canadian dividends)	–	(0.11)	(0.12)	(0.21)	(0.03)
From Canadian dividends	(0.01)	(0.32)	(0.36)	(0.20)	(0.12)
From capital gains	–	(0.20)	(0.07)	(0.20)	(0.05)
Return of capital	(0.57)	(0.48)	(0.43)	(0.46)	(0.67)
<b>Total annual distributions³</b>	<b>(0.58)</b>	<b>(1.11)</b>	<b>(0.98)</b>	<b>(1.07)</b>	<b>(0.87)</b>
<b>Net assets, end of period</b>	<b>10.12</b>	<b>11.31</b>	<b>11.98</b>	<b>10.73</b>	<b>12.45</b>
<b>Series T8</b>					
<b>Net assets, beginning of period</b>	9.17	10.02	9.27	11.08	12.05
<b>Increase (decrease) from operations:</b>					
Total revenue	0.20	0.35	0.56	0.48	0.34
Total expenses	(0.18)	(0.23)	(0.23)	(0.24)	(0.25)
Realized gains (losses) for the period	(0.15)	0.05	0.39	0.29	0.24
Unrealized gains (losses) for the period	(0.43)	(0.09)	1.19	(1.14)	(0.23)
<b>Total increase (decrease) from operations²</b>	<b>(0.56)</b>	<b>0.08</b>	<b>1.91</b>	<b>(0.61)</b>	<b>0.10</b>
<b>Distributions:</b>					
From net investment income (excluding Canadian dividends)	–	(0.09)	(0.10)	(0.19)	(0.03)
From Canadian dividends	(0.01)	(0.27)	(0.30)	(0.17)	(0.11)
From capital gains	–	(0.15)	(0.07)	(0.17)	(0.04)
Return of capital	(0.74)	(0.71)	(0.68)	(0.73)	(0.87)
<b>Total annual distributions³</b>	<b>(0.75)</b>	<b>(1.22)</b>	<b>(1.15)</b>	<b>(1.26)</b>	<b>(1.05)</b>
<b>Net assets, end of period</b>	<b>7.92</b>	<b>9.17</b>	<b>10.02</b>	<b>9.27</b>	<b>11.08</b>

# SYMMETRY MODERATE GROWTH PORTFOLIO

ANNUAL MANAGEMENT REPORT OF FUND PERFORMANCE | For the Year Ended March 31, 2023

## THE FUND'S NET ASSETS PER SECURITY (\$)¹ (cont'd)

	Mar. 31 2023	Mar. 31 2022	Mar. 31 2021	Mar. 31 2020	Mar. 31 2019
<b>Series LB</b>					
<b>Net assets, beginning of period</b>	13.00	13.25	11.46	12.74	12.85
<b>Increase (decrease) from operations:</b>					
Total revenue	0.29	0.48	0.72	0.58	0.38
Total expenses	(0.28)	(0.32)	(0.31)	(0.31)	(0.30)
Realized gains (losses) for the period	(0.12)	0.41	0.48	0.42	0.11
Unrealized gains (losses) for the period	(0.63)	(0.12)	1.53	(1.35)	(0.26)
<b>Total increase (decrease) from operations²</b>	<b>(0.74)</b>	<b>0.45</b>	<b>2.42</b>	<b>(0.66)</b>	<b>(0.07)</b>
<b>Distributions:</b>					
From net investment income (excluding Canadian dividends)	–	(0.15)	(0.19)	(0.21)	(0.04)
From Canadian dividends	–	(0.33)	(0.29)	(0.12)	(0.06)
From capital gains	–	(0.24)	(0.12)	(0.25)	(0.08)
Return of capital	–	–	–	–	–
<b>Total annual distributions³</b>	<b>–</b>	<b>(0.72)</b>	<b>(0.60)</b>	<b>(0.58)</b>	<b>(0.18)</b>
<b>Net assets, end of period</b>	<b>12.31</b>	<b>13.00</b>	<b>13.25</b>	<b>11.46</b>	<b>12.74</b>
<b>Series LF</b>					
<b>Net assets, beginning of period</b>	10.70	10.89	9.42	10.47	10.00
<b>Increase (decrease) from operations:</b>					
Total revenue	0.24	0.40	0.60	0.49	0.09
Total expenses	(0.10)	(0.11)	(0.11)	(0.10)	(0.03)
Realized gains (losses) for the period	(0.17)	0.01	0.27	(0.52)	0.66
Unrealized gains (losses) for the period	(0.52)	(0.10)	1.26	(1.16)	(0.06)
<b>Total increase (decrease) from operations²</b>	<b>(0.55)</b>	<b>0.20</b>	<b>2.02</b>	<b>(1.29)</b>	<b>0.66</b>
<b>Distributions:</b>					
From net investment income (excluding Canadian dividends)	–	(0.16)	(0.20)	(0.24)	(0.02)
From Canadian dividends	–	(0.35)	(0.31)	(0.12)	(0.04)
From capital gains	–	(0.23)	(0.14)	(0.26)	(0.05)
Return of capital	–	–	–	–	–
<b>Total annual distributions³</b>	<b>–</b>	<b>(0.74)</b>	<b>(0.65)</b>	<b>(0.62)</b>	<b>(0.11)</b>
<b>Net assets, end of period</b>	<b>10.28</b>	<b>10.70</b>	<b>10.89</b>	<b>9.42</b>	<b>10.47</b>
<b>Series LF5</b>					
<b>Net assets, beginning of period</b>	14.67	15.31	13.55	15.53	15.00
<b>Increase (decrease) from operations:</b>					
Total revenue	0.32	0.55	0.84	0.70	0.11
Total expenses	(0.13)	(0.15)	(0.15)	(0.15)	(0.02)
Realized gains (losses) for the period	(0.12)	(0.35)	0.31	(0.32)	0.68
Unrealized gains (losses) for the period	(0.70)	(0.14)	1.79	(1.65)	(0.07)
<b>Total increase (decrease) from operations²</b>	<b>(0.63)</b>	<b>(0.09)</b>	<b>2.79</b>	<b>(1.42)</b>	<b>0.70</b>
<b>Distributions:</b>					
From net investment income (excluding Canadian dividends)	(0.02)	(0.15)	(0.16)	(0.28)	(0.03)
From Canadian dividends	(0.08)	(0.51)	(0.64)	(0.41)	(0.10)
From capital gains	–	(0.26)	(0.09)	(0.26)	(0.07)
Return of capital	(0.65)	(0.49)	(0.37)	(0.40)	(0.14)
<b>Total annual distributions³</b>	<b>(0.75)</b>	<b>(1.41)</b>	<b>(1.26)</b>	<b>(1.35)</b>	<b>(0.34)</b>
<b>Net assets, end of period</b>	<b>13.31</b>	<b>14.67</b>	<b>15.31</b>	<b>13.55</b>	<b>15.53</b>

	Mar. 31 2023	Mar. 31 2022	Mar. 31 2021	Mar. 31 2020	Mar. 31 2019
<b>Series LM</b>					
<b>Net assets, beginning of period</b>	8.11	8.60	7.71	8.96	9.53
<b>Increase (decrease) from operations:</b>					
Total revenue	0.18	0.31	0.48	0.40	0.27
Total expenses	(0.17)	(0.21)	(0.20)	(0.21)	(0.22)
Realized gains (losses) for the period	(0.10)	0.30	0.35	0.37	0.04
Unrealized gains (losses) for the period	(0.38)	(0.08)	1.01	(0.93)	(0.19)
<b>Total increase (decrease) from operations²</b>	<b>(0.47)</b>	<b>0.32</b>	<b>1.64</b>	<b>(0.37)</b>	<b>(0.10)</b>
<b>Distributions:</b>					
From net investment income (excluding Canadian dividends)	–	(0.08)	(0.08)	(0.15)	(0.02)
From Canadian dividends	(0.01)	(0.22)	(0.25)	(0.14)	(0.08)
From capital gains	–	(0.14)	(0.06)	(0.14)	(0.03)
Return of capital	(0.40)	(0.35)	(0.31)	(0.34)	(0.49)
<b>Total annual distributions³</b>	<b>(0.41)</b>	<b>(0.79)</b>	<b>(0.70)</b>	<b>(0.77)</b>	<b>(0.62)</b>
<b>Net assets, end of period</b>	<b>7.25</b>	<b>8.11</b>	<b>8.60</b>	<b>7.71</b>	<b>8.96</b>
<b>Series LW</b>					
<b>Net assets, beginning of period</b>	9.95	10.15	8.77	9.75	9.82
<b>Increase (decrease) from operations:</b>					
Total revenue	0.22	0.37	0.55	0.44	0.29
Total expenses	(0.20)	(0.22)	(0.21)	(0.21)	(0.21)
Realized gains (losses) for the period	(0.10)	0.23	0.34	0.28	0.35
Unrealized gains (losses) for the period	(0.48)	(0.09)	1.17	(1.03)	(0.20)
<b>Total increase (decrease) from operations²</b>	<b>(0.56)</b>	<b>0.29</b>	<b>1.85</b>	<b>(0.52)</b>	<b>0.23</b>
<b>Distributions:</b>					
From net investment income (excluding Canadian dividends)	–	(0.12)	(0.15)	(0.18)	(0.03)
From Canadian dividends	–	(0.26)	(0.23)	(0.09)	(0.05)
From capital gains	–	(0.19)	(0.10)	(0.19)	(0.06)
Return of capital	–	–	–	–	–
<b>Total annual distributions³</b>	<b>–</b>	<b>(0.57)</b>	<b>(0.48)</b>	<b>(0.46)</b>	<b>(0.14)</b>
<b>Net assets, end of period</b>	<b>9.45</b>	<b>9.95</b>	<b>10.15</b>	<b>8.77</b>	<b>9.75</b>
<b>Series LW5</b>					
<b>Net assets, beginning of period</b>	12.38	13.10	11.73	13.58	14.43
<b>Increase (decrease) from operations:</b>					
Total revenue	0.27	0.47	0.72	0.60	0.41
Total expenses	(0.24)	(0.28)	(0.28)	(0.29)	(0.30)
Realized gains (losses) for the period	(0.13)	0.29	0.48	0.51	0.48
Unrealized gains (losses) for the period	(0.59)	(0.12)	1.53	(1.41)	(0.28)
<b>Total increase (decrease) from operations²</b>	<b>(0.69)</b>	<b>0.36</b>	<b>2.45</b>	<b>(0.59)</b>	<b>0.31</b>
<b>Distributions:</b>					
From net investment income (excluding Canadian dividends)	–	(0.12)	(0.13)	(0.22)	(0.04)
From Canadian dividends	(0.02)	(0.36)	(0.41)	(0.23)	(0.13)
From capital gains	–	(0.22)	(0.08)	(0.22)	(0.05)
Return of capital	(0.61)	(0.52)	(0.45)	(0.49)	(0.73)
<b>Total annual distributions³</b>	<b>(0.63)</b>	<b>(1.22)</b>	<b>(1.07)</b>	<b>(1.16)</b>	<b>(0.95)</b>
<b>Net assets, end of period</b>	<b>11.10</b>	<b>12.38</b>	<b>13.10</b>	<b>11.73</b>	<b>13.58</b>

# SYMMETRY MODERATE GROWTH PORTFOLIO

ANNUAL MANAGEMENT REPORT OF FUND PERFORMANCE | For the Year Ended March 31, 2023

## THE FUND'S NET ASSETS PER SECURITY (\$)¹ (cont'd)

Series LX	Mar. 31 2023	Mar. 31 2022	Mar. 31 2021	Mar. 31 2020	Mar. 31 2019
<b>Net assets, beginning of period</b>	11.54	12.23	10.97	12.74	13.56
<b>Increase (decrease) from operations:</b>					
Total revenue	0.25	0.44	0.68	0.56	0.39
Total expenses	(0.24)	(0.29)	(0.29)	(0.30)	(0.31)
Realized gains (losses) for the period	(0.18)	0.33	0.48	0.54	0.08
Unrealized gains (losses) for the period	(0.54)	(0.11)	1.43	(1.32)	(0.26)
<b>Total increase (decrease) from operations²</b>	<b>(0.71)</b>	<b>0.37</b>	<b>2.30</b>	<b>(0.52)</b>	<b>(0.10)</b>
<b>Distributions:</b>					
From net investment income (excluding Canadian dividends)	–	(0.11)	(0.12)	(0.21)	(0.03)
From Canadian dividends	(0.01)	(0.32)	(0.35)	(0.19)	(0.11)
From capital gains	–	(0.20)	(0.08)	(0.21)	(0.05)
Return of capital	(0.58)	(0.50)	(0.45)	(0.49)	(0.70)
<b>Total annual distributions³</b>	<b>(0.59)</b>	<b>(1.13)</b>	<b>(1.00)</b>	<b>(1.10)</b>	<b>(0.89)</b>
<b>Net assets, end of period</b>	<b>10.31</b>	<b>11.54</b>	<b>12.23</b>	<b>10.97</b>	<b>12.74</b>

## RATIOS AND SUPPLEMENTAL DATA

Series A	Mar. 31 2023	Mar. 31 2022	Mar. 31 2021	Mar. 31 2020	Mar. 31 2019
Total net asset value (\$000)¹	433,546	518,310	566,309	557,423	715,819
Securities outstanding (000)¹	26,129	29,607	31,734	36,131	41,715
Management expense ratio (%)²	2.28	2.29	2.29	2.29	2.29
Management expense ratio before waivers or absorptions (%)²	2.29	2.30	2.30	2.30	2.29
Trading expense ratio (%)³	0.07	0.11	0.13	0.14	0.13
Portfolio turnover rate (%)⁴	13.74	15.46	34.20	46.78	49.89
Net asset value per security (\$)	16.59	17.51	17.85	15.43	17.16
Series AR	Mar. 31 2023	Mar. 31 2022	Mar. 31 2021	Mar. 31 2020	Mar. 31 2019
Total net asset value (\$000)¹	96,435	99,420	94,884	75,372	75,927
Securities outstanding (000)¹	7,414	7,246	6,784	6,233	5,647
Management expense ratio (%)²	2.27	2.28	2.28	2.28	2.28
Management expense ratio before waivers or absorptions (%)²	2.28	2.29	2.29	2.29	2.28
Trading expense ratio (%)³	0.07	0.11	0.13	0.14	0.13
Portfolio turnover rate (%)⁴	13.74	15.46	34.20	46.78	49.89
Net asset value per security (\$)	13.01	13.72	13.99	12.09	13.45
Series B	Mar. 31 2023	Mar. 31 2022	Mar. 31 2021	Mar. 31 2020	Mar. 31 2019
Total net asset value (\$000)¹	12,504	15,946	18,176	17,798	23,331
Securities outstanding (000)¹	1,094	1,323	1,479	1,675	1,975
Management expense ratio (%)²	2.27	2.29	2.29	2.29	2.40
Management expense ratio before waivers or absorptions (%)²	2.28	2.29	2.30	2.30	2.40
Trading expense ratio (%)³	0.07	0.11	0.13	0.14	0.13
Portfolio turnover rate (%)⁴	13.74	15.46	34.20	46.78	49.89
Net asset value per security (\$)	11.43	12.05	12.29	10.62	11.81

(1) This information is provided as at the end of the fiscal period shown.

(2) Management expense ratio ("MER") is based on total expenses, excluding commissions and other portfolio transaction costs, income taxes and withholding taxes, for the stated period and is expressed as an annualized percentage of daily average net assets during the period, except as noted. In the period a series is established, the MER is annualized from the date of inception to the end of the period. Where the Fund directly invests in securities of another fund (including exchange-traded funds or "ETFs"), the MERs presented for the Fund include the portion of MERs of the other fund(s) attributable to this investment. Any income distributions received from ETFs managed by the Manager, with the intention of offsetting fees paid within those ETFs but which are not considered to be duplicative fees under regulatory requirements, are treated as waived expenses for MER purposes. The Manager may waive or absorb operating expenses at its discretion and stop waiving or absorbing such expenses at any time without notice.

(3) The trading expense ratio ("TER") represents total commissions and other portfolio transaction costs incurred as an annualized percentage of daily average net assets during the period. Where the Fund invests in securities of another fund (including ETFs), the TERs presented for the Fund include the portion of TERs of the other fund(s) attributable to this investment.

(4) The Fund's portfolio turnover rate indicates how actively the Fund's portfolio advisor manages its portfolio investments. A portfolio turnover rate of 100% is equivalent to the Fund buying and selling all of the securities in its portfolio once in the course of the period. The higher the Fund's portfolio turnover rate in a period, the greater the trading costs payable by the Fund in the period, and the greater the chance of an investor receiving taxable capital gains in the year. There is not necessarily a relationship between a high turnover rate and the performance of a fund. The portfolio turnover rate is not provided when the Fund is less than one year old. The value of any trades to realign the Fund's portfolio after a fund merger, if any, is excluded from the portfolio turnover rate.



# SYMMETRY MODERATE GROWTH PORTFOLIO

ANNUAL MANAGEMENT REPORT OF FUND PERFORMANCE | For the Year Ended March 31, 2023

## RATIOS AND SUPPLEMENTAL DATA (cont'd)

	Mar. 31 2023	Mar. 31 2022	Mar. 31 2021	Mar. 31 2020	Mar. 31 2019
<b>Series C</b>					
Total net asset value (\$000) <sup>1</sup>	457	545	195	176	296
Securities outstanding (000) <sup>1</sup>	40	45	16	16	25
Management expense ratio (%) <sup>2</sup>	2.48	2.49	2.45	2.45	2.48
Management expense ratio before waivers or absorptions (%) <sup>2</sup>	2.49	2.49	2.46	2.46	2.49
Trading expense ratio (%) <sup>3</sup>	0.07	0.11	0.13	0.14	0.13
Portfolio turnover rate (%) <sup>4</sup>	13.74	15.46	34.20	46.78	49.89
Net asset value per security (\$)	11.47	12.13	12.36	10.68	11.88
<b>Series D</b>					
Total net asset value (\$000) <sup>1</sup>	4,474	1,184	1,224	1,234	1,350
Securities outstanding (000) <sup>1</sup>	404	103	104	121	119
Management expense ratio (%) <sup>2</sup>	1.13	1.42	1.42	1.41	1.41
Management expense ratio before waivers or absorptions (%) <sup>2</sup>	1.14	1.43	1.43	1.42	1.41
Trading expense ratio (%) <sup>3</sup>	0.07	0.11	0.13	0.14	0.13
Portfolio turnover rate (%) <sup>4</sup>	13.74	15.46	34.20	46.78	49.89
Net asset value per security (\$)	11.07	11.54	11.76	10.17	11.32
<b>Series DZ</b>					
Total net asset value (\$000) <sup>1</sup>	9,393	11,683	12,395	11,464	14,309
Securities outstanding (000) <sup>1</sup>	796	938	977	1,045	1,173
Management expense ratio (%) <sup>2</sup>	2.27	2.28	2.28	2.28	2.28
Management expense ratio before waivers or absorptions (%) <sup>2</sup>	2.28	2.29	2.29	2.29	2.29
Trading expense ratio (%) <sup>3</sup>	0.07	0.11	0.13	0.14	0.13
Portfolio turnover rate (%) <sup>4</sup>	13.74	15.46	34.20	46.78	49.89
Net asset value per security (\$)	11.80	12.45	12.69	10.97	12.20
<b>Series F</b>					
Total net asset value (\$000) <sup>1</sup>	153,338	185,613	105,757	92,317	100,928
Securities outstanding (000) <sup>1</sup>	9,175	10,668	5,971	6,027	5,928
Management expense ratio (%) <sup>2</sup>	0.95	0.96	0.96	0.95	0.97
Management expense ratio before waivers or absorptions (%) <sup>2</sup>	0.96	0.96	0.96	0.96	0.97
Trading expense ratio (%) <sup>3</sup>	0.07	0.11	0.13	0.14	0.13
Portfolio turnover rate (%) <sup>4</sup>	13.74	15.46	34.20	46.78	49.89
Net asset value per security (\$)	16.71	17.40	17.71	15.32	17.03
<b>Series F5</b>					
Total net asset value (\$000) <sup>1</sup>	2,919	2,820	1,333	977	948
Securities outstanding (000) <sup>1</sup>	279	245	111	91	78
Management expense ratio (%) <sup>2</sup>	0.93	0.95	0.97	0.96	0.93
Management expense ratio before waivers or absorptions (%) <sup>2</sup>	0.94	0.95	0.97	0.97	0.93
Trading expense ratio (%) <sup>3</sup>	0.07	0.11	0.13	0.14	0.13
Portfolio turnover rate (%) <sup>4</sup>	13.74	15.46	34.20	46.78	49.89
Net asset value per security (\$)	10.46	11.52	12.06	10.68	12.23

	Mar. 31 2023	Mar. 31 2022	Mar. 31 2021	Mar. 31 2020	Mar. 31 2019
<b>Series F8</b>					
Total net asset value (\$000) <sup>1</sup>	3,765	6,154	167	140	126
Securities outstanding (000) <sup>1</sup>	446	637	16	15	11
Management expense ratio (%) <sup>2</sup>	0.94	0.94	0.95	0.97	0.96
Management expense ratio before waivers or absorptions (%) <sup>2</sup>	0.94	0.95	0.96	0.98	0.97
Trading expense ratio (%) <sup>3</sup>	0.07	0.11	0.13	0.14	0.13
Portfolio turnover rate (%) <sup>4</sup>	13.74	15.46	34.20	46.78	49.89
Net asset value per security (\$)	8.45	9.65	10.41	9.51	11.22
<b>Series FB</b>					
Total net asset value (\$000) <sup>1</sup>	5,107	5,698	6,208	4,066	4,895
Securities outstanding (000) <sup>1</sup>	495	530	566	428	463
Management expense ratio (%) <sup>2</sup>	1.15	1.16	1.16	1.17	1.18
Management expense ratio before waivers or absorptions (%) <sup>2</sup>	1.15	1.17	1.17	1.18	1.18
Trading expense ratio (%) <sup>3</sup>	0.07	0.11	0.13	0.14	0.13
Portfolio turnover rate (%) <sup>4</sup>	13.74	15.46	34.20	46.78	49.89
Net asset value per security (\$)	10.31	10.76	10.98	9.49	10.58
<b>Series FB5</b>					
Total net asset value (\$000) <sup>1</sup>	3	3	1	6	1
Securities outstanding (000) <sup>1</sup>	-	-	-	1	-
Management expense ratio (%) <sup>2</sup>	1.19	1.20	1.16	1.18	1.20
Management expense ratio before waivers or absorptions (%) <sup>2</sup>	1.20	1.21	1.16	1.19	1.21
Trading expense ratio (%) <sup>3</sup>	0.07	0.11	0.13	0.14	0.13
Portfolio turnover rate (%) <sup>4</sup>	13.74	15.46	34.20	46.78	49.89
Net asset value per security (\$)	11.52	12.71	13.33	11.82	13.56
<b>Series FR</b>					
Total net asset value (\$000) <sup>1</sup>	3,460	n/a	n/a	n/a	n/a
Securities outstanding (000) <sup>1</sup>	317	n/a	n/a	n/a	n/a
Management expense ratio (%) <sup>2</sup>	1.18	n/a	n/a	n/a	n/a
Management expense ratio before waivers or absorptions (%) <sup>2</sup>	1.19	n/a	n/a	n/a	n/a
Trading expense ratio (%) <sup>3</sup>	0.07	n/a	n/a	n/a	n/a
Portfolio turnover rate (%) <sup>4</sup>	13.74	n/a	n/a	n/a	n/a
Net asset value per security (\$)	10.91	n/a	n/a	n/a	n/a
<b>Series G</b>					
Total net asset value (\$000) <sup>1</sup>	4,905	5,183	5,079	3,864	4,086
Securities outstanding (000) <sup>1</sup>	333	336	323	284	270
Management expense ratio (%) <sup>2</sup>	1.66	1.66	1.67	1.67	1.67
Management expense ratio before waivers or absorptions (%) <sup>2</sup>	1.67	1.67	1.67	1.67	1.67
Trading expense ratio (%) <sup>3</sup>	0.07	0.11	0.13	0.14	0.13
Portfolio turnover rate (%) <sup>4</sup>	13.74	15.46	34.20	46.78	49.89
Net asset value per security (\$)	14.71	15.42	15.72	13.59	15.11

# SYMMETRY MODERATE GROWTH PORTFOLIO

ANNUAL MANAGEMENT REPORT OF FUND PERFORMANCE | For the Year Ended March 31, 2023

## RATIOS AND SUPPLEMENTAL DATA (cont'd)

	Mar. 31 2023	Mar. 31 2022	Mar. 31 2021	Mar. 31 2020	Mar. 31 2019
<b>Series J</b>					
Total net asset value (\$000) <sup>1</sup>	–	–	–	–	1
Securities outstanding (000) <sup>1</sup>	–	–	–	–	–
Management expense ratio (%) <sup>2</sup>	2.05	2.06	2.06	2.06	2.06
Management expense ratio before waivers or absorptions (%) <sup>2</sup>	2.06	2.07	2.07	2.07	2.07
Trading expense ratio (%) <sup>3</sup>	0.07	0.11	0.13	0.14	0.13
Portfolio turnover rate (%) <sup>4</sup>	13.74	15.46	34.20	46.78	49.89
Net asset value per security (\$)	12.96	13.58	13.84	11.95	13.29
<b>Series O</b>					
Total net asset value (\$000) <sup>1</sup>	33,184	40,101	10,864	9,278	9,418
Securities outstanding (000) <sup>1</sup>	2,512	2,943	785	775	708
Management expense ratio (%) <sup>2</sup>	0.01	0.01	0.02	0.01	0.01
Management expense ratio before waivers or absorptions (%) <sup>2</sup>	0.01	0.02	0.02	0.02	0.02
Trading expense ratio (%) <sup>3</sup>	0.07	0.11	0.13	0.14	0.13
Portfolio turnover rate (%) <sup>4</sup>	13.74	15.46	34.20	46.78	49.89
Net asset value per security (\$)	13.21	13.63	13.84	11.98	13.31
<b>Series O5</b>					
Total net asset value (\$000) <sup>1</sup>	1,539	5,927	1	20	22
Securities outstanding (000) <sup>1</sup>	123	435	–	2	2
Management expense ratio (%) <sup>2</sup>	0.01	0.01	0.02	0.01	0.01
Management expense ratio before waivers or absorptions (%) <sup>2</sup>	0.01	0.02	0.02	0.02	0.02
Trading expense ratio (%) <sup>3</sup>	0.07	0.11	0.13	0.14	0.13
Portfolio turnover rate (%) <sup>4</sup>	13.74	15.46	34.20	46.78	49.89
Net asset value per security (\$)	12.49	13.63	14.10	12.37	14.04
<b>Series PW</b>					
Total net asset value (\$000) <sup>1</sup>	640,174	723,980	577,767	468,794	509,845
Securities outstanding (000) <sup>1</sup>	56,504	60,704	47,534	44,608	43,653
Management expense ratio (%) <sup>2</sup>	2.06	2.06	2.06	2.06	2.07
Management expense ratio before waivers or absorptions (%) <sup>2</sup>	2.06	2.07	2.07	2.07	2.07
Trading expense ratio (%) <sup>3</sup>	0.07	0.11	0.13	0.14	0.13
Portfolio turnover rate (%) <sup>4</sup>	13.74	15.46	34.20	46.78	49.89
Net asset value per security (\$)	11.33	11.93	12.15	10.51	11.68
<b>Series PWFB</b>					
Total net asset value (\$000) <sup>1</sup>	42,524	51,328	26,238	17,794	17,044
Securities outstanding (000) <sup>1</sup>	4,259	4,938	2,480	1,945	1,677
Management expense ratio (%) <sup>2</sup>	0.95	0.95	0.95	0.95	0.98
Management expense ratio before waivers or absorptions (%) <sup>2</sup>	0.96	0.96	0.96	0.96	0.99
Trading expense ratio (%) <sup>3</sup>	0.07	0.11	0.13	0.14	0.13
Portfolio turnover rate (%) <sup>4</sup>	13.74	15.46	34.20	46.78	49.89
Net asset value per security (\$)	9.98	10.39	10.58	9.15	10.17

	Mar. 31 2023	Mar. 31 2022	Mar. 31 2021	Mar. 31 2020	Mar. 31 2019
<b>Series PWFB5</b>					
Total net asset value (\$000) <sup>1</sup>	370	785	1	1	1
Securities outstanding (000) <sup>1</sup>	31	59	–	–	–
Management expense ratio (%) <sup>2</sup>	0.92	0.93	0.98	0.97	1.00
Management expense ratio before waivers or absorptions (%) <sup>2</sup>	0.93	0.94	0.98	0.98	1.00
Trading expense ratio (%) <sup>3</sup>	0.07	0.11	0.13	0.14	0.13
Portfolio turnover rate (%) <sup>4</sup>	13.74	15.46	34.20	46.78	49.89
Net asset value per security (\$)	12.12	13.36	13.96	12.34	14.09
<b>Series PWR</b>					
Total net asset value (\$000) <sup>1</sup>	31,310	26,228	15,334	6,505	n/a
Securities outstanding (000) <sup>1</sup>	3,235	2,575	1,477	725	n/a
Management expense ratio (%) <sup>2</sup>	2.04	2.05	2.05	2.05	n/a
Management expense ratio before waivers or absorptions (%) <sup>2</sup>	2.05	2.06	2.06	2.06	n/a
Trading expense ratio (%) <sup>3</sup>	0.07	0.11	0.13	0.14	n/a
Portfolio turnover rate (%) <sup>4</sup>	13.74	15.46	34.20	46.78	n/a
Net asset value per security (\$)	9.68	10.19	10.38	8.98	n/a
<b>Series PWT5</b>					
Total net asset value (\$000) <sup>1</sup>	9,279	10,030	3,749	2,488	2,193
Securities outstanding (000) <sup>1</sup>	837	812	287	213	163
Management expense ratio (%) <sup>2</sup>	2.02	2.02	2.01	2.03	2.07
Management expense ratio before waivers or absorptions (%) <sup>2</sup>	2.03	2.03	2.01	2.04	2.07
Trading expense ratio (%) <sup>3</sup>	0.07	0.11	0.13	0.14	0.13
Portfolio turnover rate (%) <sup>4</sup>	13.74	15.46	34.20	46.78	49.89
Net asset value per security (\$)	11.08	12.35	13.05	11.67	13.49
<b>Series PWT8</b>					
Total net asset value (\$000) <sup>1</sup>	3,301	4,405	311	359	290
Securities outstanding (000) <sup>1</sup>	355	409	26	33	22
Management expense ratio (%) <sup>2</sup>	2.03	2.03	1.99	2.02	2.09
Management expense ratio before waivers or absorptions (%) <sup>2</sup>	2.03	2.04	2.00	2.03	2.09
Trading expense ratio (%) <sup>3</sup>	0.07	0.11	0.13	0.14	0.13
Portfolio turnover rate (%) <sup>4</sup>	13.74	15.46	34.20	46.78	49.89
Net asset value per security (\$)	9.31	10.76	11.72	10.81	12.90
<b>Series PWX</b>					
Total net asset value (\$000) <sup>1</sup>	44,427	48,121	41,491	33,027	36,379
Securities outstanding (000) <sup>1</sup>	3,842	4,035	3,418	3,144	3,117
Management expense ratio (%) <sup>2</sup>	0.01	0.01	0.02	0.01	0.02
Management expense ratio before waivers or absorptions (%) <sup>2</sup>	0.01	0.02	0.02	0.02	0.02
Trading expense ratio (%) <sup>3</sup>	0.07	0.11	0.13	0.14	0.13
Portfolio turnover rate (%) <sup>4</sup>	13.74	15.46	34.20	46.78	49.89
Net asset value per security (\$)	11.56	11.93	12.14	10.51	11.67

# SYMMETRY MODERATE GROWTH PORTFOLIO

ANNUAL MANAGEMENT REPORT OF FUND PERFORMANCE | For the Year Ended March 31, 2023

## RATIOS AND SUPPLEMENTAL DATA (cont'd)

	Mar. 31 2023	Mar. 31 2022	Mar. 31 2021	Mar. 31 2020	Mar. 31 2019
<b>Series PWX8</b>					
Total net asset value (\$000) <sup>1</sup>	1	1	1	1	1
Securities outstanding (000) <sup>1</sup>	-	-	-	-	-
Management expense ratio (%) <sup>2</sup>	0.01	0.01	0.02	0.01	0.01
Management expense ratio before waivers or absorptions (%) <sup>2</sup>	0.01	0.02	0.02	0.02	0.02
Trading expense ratio (%) <sup>3</sup>	0.07	0.11	0.13	0.14	0.13
Portfolio turnover rate (%) <sup>4</sup>	13.74	15.46	34.20	46.78	49.89
Net asset value per security (\$)	11.92	13.49	14.46	13.10	15.32
<b>Series R</b>					
Total net asset value (\$000) <sup>1</sup>	n/a	n/a	323,435	386,703	455,732
Securities outstanding (000) <sup>1</sup>	n/a	n/a	28,590	39,526	41,362
Management expense ratio (%) <sup>2</sup>	n/a	n/a	0.02	0.01	0.01
Management expense ratio before waivers or absorptions (%) <sup>2</sup>	n/a	n/a	0.02	0.02	0.02
Trading expense ratio (%) <sup>3</sup>	n/a	n/a	0.13	0.14	0.13
Portfolio turnover rate (%) <sup>4</sup>	n/a	n/a	34.20	46.78	49.89
Net asset value per security (\$)	n/a	n/a	11.31	9.78	11.02
<b>Series S</b>					
Total net asset value (\$000) <sup>1</sup>	19,962	19,635	17,374	12,833	12,744
Securities outstanding (000) <sup>1</sup>	1,578	1,482	1,290	1,103	973
Management expense ratio (%) <sup>2</sup>	0.03	0.04	0.04	0.04	0.04
Management expense ratio before waivers or absorptions (%) <sup>2</sup>	0.04	0.05	0.05	0.05	0.05
Trading expense ratio (%) <sup>3</sup>	0.07	0.11	0.13	0.14	0.13
Portfolio turnover rate (%) <sup>4</sup>	13.74	15.46	34.20	46.78	49.89
Net asset value per security (\$)	12.65	13.25	13.46	11.64	13.10
<b>Series T5</b>					
Total net asset value (\$000) <sup>1</sup>	3,915	3,592	1,919	2,340	3,654
Securities outstanding (000) <sup>1</sup>	387	318	160	218	293
Management expense ratio (%) <sup>2</sup>	2.29	2.29	2.27	2.26	2.25
Management expense ratio before waivers or absorptions (%) <sup>2</sup>	2.30	2.30	2.28	2.27	2.25
Trading expense ratio (%) <sup>3</sup>	0.07	0.11	0.13	0.14	0.13
Portfolio turnover rate (%) <sup>4</sup>	13.74	15.46	34.20	46.78	49.89
Net asset value per security (\$)	10.12	11.31	11.98	10.73	12.45
<b>Series T8</b>					
Total net asset value (\$000) <sup>1</sup>	1,808	2,581	1,548	1,532	1,749
Securities outstanding (000) <sup>1</sup>	228	281	154	165	158
Management expense ratio (%) <sup>2</sup>	2.28	2.28	2.25	2.24	2.21
Management expense ratio before waivers or absorptions (%) <sup>2</sup>	2.29	2.29	2.26	2.25	2.21
Trading expense ratio (%) <sup>3</sup>	0.07	0.11	0.13	0.14	0.13
Portfolio turnover rate (%) <sup>4</sup>	13.74	15.46	34.20	46.78	49.89
Net asset value per security (\$)	7.92	9.17	10.02	9.27	11.08

	Mar. 31 2023	Mar. 31 2022	Mar. 31 2021	Mar. 31 2020	Mar. 31 2019
<b>Series LB</b>					
Total net asset value (\$000) <sup>1</sup>	88,912	101,326	106,643	97,933	120,388
Securities outstanding (000) <sup>1</sup>	7,222	7,795	8,048	8,549	9,446
Management expense ratio (%) <sup>2</sup>	2.36	2.37	2.37	2.37	2.37
Management expense ratio before waivers or absorptions (%) <sup>2</sup>	2.37	2.38	2.38	2.38	2.38
Trading expense ratio (%) <sup>3</sup>	0.07	0.11	0.13	0.14	0.13
Portfolio turnover rate (%) <sup>4</sup>	13.74	15.46	34.20	46.78	49.89
Net asset value per security (\$)	12.31	13.00	13.25	11.46	12.74
<b>Series LF</b>					
Total net asset value (\$000) <sup>1</sup>	33,469	40,689	20,900	14,371	2,899
Securities outstanding (000) <sup>1</sup>	3,257	3,802	1,919	1,525	277
Management expense ratio (%) <sup>2</sup>	0.98	0.99	0.99	0.99	0.98
Management expense ratio before waivers or absorptions (%) <sup>2</sup>	0.99	1.00	1.00	1.00	0.99
Trading expense ratio (%) <sup>3</sup>	0.07	0.11	0.13	0.14	0.13
Portfolio turnover rate (%) <sup>4</sup>	13.74	15.46	34.20	46.78	49.89
Net asset value per security (\$)	10.28	10.70	10.89	9.42	10.47
<b>Series LF5</b>					
Total net asset value (\$000) <sup>1</sup>	3,695	4,434	1,164	652	155
Securities outstanding (000) <sup>1</sup>	278	302	76	48	10
Management expense ratio (%) <sup>2</sup>	0.98	0.99	0.99	0.99	0.97
Management expense ratio before waivers or absorptions (%) <sup>2</sup>	0.99	1.00	1.00	1.00	0.97
Trading expense ratio (%) <sup>3</sup>	0.07	0.11	0.13	0.14	0.13
Portfolio turnover rate (%) <sup>4</sup>	13.74	15.46	34.20	46.78	49.89
Net asset value per security (\$)	13.31	14.67	15.31	13.55	15.53
<b>Series LM</b>					
Total net asset value (\$000) <sup>1</sup>	8,229	9,969	12,105	13,066	19,123
Securities outstanding (000) <sup>1</sup>	1,135	1,229	1,408	1,694	2,135
Management expense ratio (%) <sup>2</sup>	2.36	2.37	2.37	2.37	2.37
Management expense ratio before waivers or absorptions (%) <sup>2</sup>	2.37	2.38	2.38	2.38	2.37
Trading expense ratio (%) <sup>3</sup>	0.07	0.11	0.13	0.14	0.13
Portfolio turnover rate (%) <sup>4</sup>	13.74	15.46	34.20	46.78	49.89
Net asset value per security (\$)	7.25	8.11	8.60	7.71	8.96
<b>Series LW</b>					
Total net asset value (\$000) <sup>1</sup>	138,199	162,828	140,777	118,644	144,202
Securities outstanding (000) <sup>1</sup>	14,625	16,357	13,875	13,525	14,794
Management expense ratio (%) <sup>2</sup>	2.13	2.14	2.14	2.14	2.22
Management expense ratio before waivers or absorptions (%) <sup>2</sup>	2.14	2.15	2.15	2.15	2.22
Trading expense ratio (%) <sup>3</sup>	0.07	0.11	0.13	0.14	0.13
Portfolio turnover rate (%) <sup>4</sup>	13.74	15.46	34.20	46.78	49.89
Net asset value per security (\$)	9.45	9.95	10.15	8.77	9.75

# SYMMETRY MODERATE GROWTH PORTFOLIO

ANNUAL MANAGEMENT REPORT OF FUND PERFORMANCE | For the Year Ended March 31, 2023

## RATIOS AND SUPPLEMENTAL DATA (cont'd)

	Mar. 31 2023	Mar. 31 2022	Mar. 31 2021	Mar. 31 2020	Mar. 31 2019
<b>Series LW5</b>					
Total net asset value (\$000) <sup>1</sup>	26,979	32,296	27,524	24,983	34,065
Securities outstanding (000) <sup>1</sup>	2,431	2,608	2,101	2,130	2,508
Management expense ratio (%) <sup>2</sup>	2.13	2.14	2.14	2.14	2.22
Management expense ratio before waivers or absorptions (%) <sup>2</sup>	2.14	2.15	2.15	2.15	2.22
Trading expense ratio (%) <sup>3</sup>	0.07	0.11	0.13	0.14	0.13
Portfolio turnover rate (%) <sup>4</sup>	13.74	15.46	34.20	46.78	49.89
Net asset value per security (\$)	11.10	12.38	13.10	11.73	13.58
	Mar. 31 2023	Mar. 31 2022	Mar. 31 2021	Mar. 31 2020	Mar. 31 2019
<b>Series LX</b>					
Total net asset value (\$000) <sup>1</sup>	2,063	2,570	2,632	2,510	3,340
Securities outstanding (000) <sup>1</sup>	200	223	215	229	262
Management expense ratio (%) <sup>2</sup>	2.36	2.37	2.37	2.37	2.37
Management expense ratio before waivers or absorptions (%) <sup>2</sup>	2.37	2.38	2.38	2.38	2.37
Trading expense ratio (%) <sup>3</sup>	0.07	0.11	0.13	0.14	0.13
Portfolio turnover rate (%) <sup>4</sup>	13.74	15.46	34.20	46.78	49.89
Net asset value per security (\$)	10.31	11.54	12.23	10.97	12.74

## Management Fees

The management fee for each applicable series is calculated and accrued daily as a percentage of its NAV. The Fund's management fees were used by the Manager to pay for the costs of managing the investment portfolio of the Fund and/or the underlying fund(s), as applicable, including providing investment analysis and recommendations, making investment decisions, making brokerage arrangements for the purchase and sale of the investment portfolio, and providing other services. The Manager also used the management fees to fund sales commissions, trailing commissions and any other compensation (collectively "distribution-related payments") to registered dealers and brokers whose clients invest in the Fund.

LBC Financial Services Inc. ("LBC") is the principal distributor for the LBC series securities of the Fund (as listed under *Fund Formation and Series Information*) and receives a portion of the management fees that the Fund pays to the Manager. Under this arrangement, LBC was entitled to approximately 25% of the total management fees that the Manager received from the LBC series of all Mackenzie funds during the period. The Manager is responsible for paying all distribution-related payments to LBC-authorized dealers whose clients invest in the LBC series of the Fund.

The following dealers affiliated with the Manager may be entitled to distribution-related payments from the Manager on the same basis as unrelated registered brokers and dealers: IPC Securities Corporation, Investors Group Securities Inc., IPC Investment Corporation and Investors Group Financial Services Inc.

The Manager used approximately 42% of the total management fee revenues received from all Mackenzie funds during the period to fund distribution-related payments to registered dealers and brokers. In comparison, such distribution-related payments for the Fund represented on average 42% of the management fees paid by all applicable series of the Fund during the period. The actual percentage for each series may be higher or lower than the average depending on the level of trailing commissions and sales commissions paid for that series.

# SYMMETRY MODERATE GROWTH PORTFOLIO

ANNUAL MANAGEMENT REPORT OF FUND PERFORMANCE | For the Year Ended March 31, 2023

## Fund Formation and Series Information

The Fund may have undergone a number of changes, such as a reorganization or a change in manager, mandate or name. A history of the major changes affecting the Fund in the last 10 years can be found in the Fund's Simplified Prospectus.

Date of Formation: November 19, 2008

The Fund may issue an unlimited number of securities of each series. The number of issued and outstanding securities of each series is disclosed under *Financial Highlights*.

**Series Offered by Mackenzie Financial Corporation** (180 Queen Street West, Toronto, Ontario, M5V 3K1; 1-800-387-0614; [www.mackenzieinvestments.com](http://www.mackenzieinvestments.com))

Series A, Series T5 and Series T8 securities are offered to retail investors investing a minimum of \$500 (\$5,000 for Series T5 and Series T8). Investors in Series T5 and Series T8 securities also want to receive a monthly cash flow of 5% or 8% per year, respectively.

Series AR securities are offered to retail investors in a Registered Disability Savings Plan offered by Mackenzie.

Series D securities are offered to retail investors investing a minimum of \$500 through a discount brokerage or other account approved by Mackenzie.

Series F, Series F5 and Series F8 securities are offered to investors who are enrolled in a dealer-sponsored fee-for-service or wrap program, who are subject to an asset-based fee rather than commissions on each transaction and who invest at least \$500 (\$5,000 for Series F5 and Series F8); they are also available to employees of Mackenzie and its subsidiaries, and directors of Mackenzie. Investors in Series F5 and Series F8 securities also want to receive a monthly cash flow of 5% or 8% per year, respectively.

Series FB and Series FB5 securities are offered to retail investors investing a minimum of \$500. Investors are required to negotiate their advisor service fee, which cannot exceed 1.50%, with their financial advisor. Investors in Series FB5 securities also want to receive a monthly cash flow of 5% per year.

Series FR securities are offered to retail investors in a Registered Disability Savings Plan offered by Mackenzie through the Ontario Government Office of the Public Guardian and Trustee (OPGT), or similar programs.

Series O and Series O5 securities are offered only to investors investing a minimum of \$500,000 who are enrolled in Mackenzie Portfolio Architecture Service or Open Architecture Service; certain institutional investors; investors in a qualified group plan, and certain qualifying employees of Mackenzie and its subsidiaries. Investors in Series O5 securities also want to receive a monthly cash flow of 5% per year.

Series PW, Series PWT5 and Series PWT8 securities are offered through our Private Wealth Solutions to certain high net worth investors who invest a minimum of \$100,000. Investors in Series PWT5 and Series PWT8 securities also want to receive a monthly cash flow of 5% or 8% per year, respectively.

Series PWFB and Series PWFB5 securities are offered through our Private Wealth Solutions to certain high net worth investors who invest a minimum of \$100,000. Investors are required to negotiate their advisor service fee, which cannot exceed 1.50%, with their financial advisor. Investors in Series PWFB5 securities also want to receive a monthly cash flow of 5% per year.

Series PWR securities are offered through our Private Wealth Solutions to certain high net worth investors who invest a minimum of \$100,000 in a Registered Disability Savings Plan offered by Mackenzie.

Series PWX and Series PWX8 securities are offered through our Private Wealth Solutions to certain high net worth investors who invest a minimum of \$100,000. Investors are required to negotiate their advisor service fee, which cannot exceed 1.50%, with their financial advisor. Investors in Series PWX8 securities also want to receive a monthly cash flow of 8% per year.

Series S securities are offered to The Canada Life Assurance Company and certain other mutual funds, but may be sold to other investors as determined by Mackenzie.

Series B, Series C and Series DZ securities were created specifically for the purpose of implementing mergers affecting the Fund and are not available for sale. Before November 13, 2013, Series DZ securities were known as Series D.

Series G securities are no longer available for sale, except for additional purchases by investors who have held these securities since December 11, 2017.

Series J and Series R securities are no longer available for sale.

**Series Distributed by LBC Financial Services Inc.** (1360 René-Lévesque Blvd. West, 13th Floor, Montréal, Québec H3G 0A9; 1-800-522-1846; [www.laurentianbank.ca/mackenzie](http://www.laurentianbank.ca/mackenzie))

Series LB and Series LX securities are offered to retail investors investing a minimum of \$500 (\$5,000 for Series LX). Investors in Series LX securities also want to receive a monthly cash flow of 5% per year.

Series LF and Series LF5 securities are offered to retail investors investing a minimum of \$500 (\$5,000 for Series LF5), who are enrolled in the LBC Private Banking sponsored fee-for-service program. Investors in Series LF5 securities also want to receive a monthly cash flow of 5% per year.

Series LW and Series LW5 securities are offered through our Preferred Pricing Program to certain high net worth investors who invest a minimum of \$100,000. Investors in Series LW5 securities also want to receive a monthly cash flow of 5% per year.

Series LM securities are no longer available for sale, except that pre-authorized contribution plans that were in place as at November 25, 2015, may continue.

Effective June 1, 2022, an investor may purchase the Fund under a sales charge purchase option and a no-load purchase option. Not all purchase options are available under each series of the Fund. The sales charge under the sales charge purchase option is negotiated by the investor with their dealer. Securities purchased before June 1, 2022, under the redemption charge purchase option, low-load 3 purchase option and low-load 2 purchase option (collectively the "deferred sales charge purchase options") may continue to be held in investor accounts. Investors may switch from securities of a Mackenzie fund previously purchased under these deferred sales charge purchase options to securities of other Mackenzie funds, under the same purchase option, until such time as the redemption schedule has expired. For further details, please refer to the Fund's Simplified Prospectus and Fund Facts.

# SYMMETRY MODERATE GROWTH PORTFOLIO

ANNUAL MANAGEMENT REPORT OF FUND PERFORMANCE | For the Year Ended March 31, 2023

## Fund Formation and Series Information (cont'd)

Series	Inception/ Reinstatement Date	Management Fee	Administration Fee
Series A	November 24, 2008	1.85%	0.20%
Series AR	December 2, 2011	1.85%	0.20%
Series B	May 6, 2011	1.85%	0.20%
Series C	May 6, 2011	1.98%	0.27%
Series D	February 3, 2014	0.85% <sup>(4)</sup>	0.16%
Series DZ	May 13, 2011	1.79%	0.27%
Series F	January 5, 2009	0.70%	0.15%
Series F5	May 13, 2014	0.70%	0.15%
Series F8	February 3, 2014	0.70%	0.15%
Series FB	October 26, 2015	0.85%	0.20%
Series FB5	October 26, 2015	0.85%	0.20%
Series FR	October 3, 2022	0.85%	0.20%
Series G	July 29, 2009	1.35%	0.20%
Series J	March 18, 2010	1.75%	0.20%
Series O	August 29, 2012	— <sup>(1)</sup>	n/a
Series O5	October 16, 2017	— <sup>(1)</sup>	n/a
Series PW	October 15, 2013	1.70%	0.15%
Series PWFB	April 3, 2017	0.70%	0.15%
Series PWFB5	April 3, 2017	0.70%	0.15%
Series PWR	April 1, 2019	1.70%	0.15%
Series PWT5	April 3, 2017	1.70%	0.15%
Series PWT8	April 3, 2017	1.70%	0.15%
Series PWX	December 9, 2013	— <sup>(2)</sup>	— <sup>(2)</sup>
Series PWX8	October 24, 2018	— <sup>(2)</sup>	— <sup>(2)</sup>
Series R	None issued <sup>(3)</sup>	n/a	n/a
Series S	July 15, 2011	— <sup>(1)</sup>	0.025%
Series T5	May 31, 2013	1.85%	0.20%
Series T8	August 6, 2013	1.85%	0.20%
Series LB	February 1, 2012	1.85%	0.20%
Series LF	December 7, 2018	0.70%	0.15%
Series LF5	December 7, 2018	0.70%	0.15%
Series LM	January 31, 2012	1.85%	0.20%
Series LW	December 1, 2017	1.70%	0.15%
Series LW5	December 1, 2017	1.70%	0.15%
Series LX	June 14, 2013	1.85%	0.20%

(1) This fee is negotiable and payable directly to Mackenzie by investors in this series.

(2) This fee is payable directly to Mackenzie by investors in this series through redemptions of their securities.

(3) The series' original start date was October 21, 2015. All securities in the series were redeemed on September 24, 2021.

(4) Prior to April 4, 2022, the management fee for Series D was charged to the Fund at a rate of 1.10%.