

MACKENZIE US INVESTMENT GRADE CORPORATE BOND INDEX ETF (CAD-HEDGED)

Interim Management Report of Fund Performance

For the Six-Month Period Ended September 30, 2022

This Interim Management Report of Fund Performance contains financial highlights but does not contain either the interim financial report or annual financial statements of the exchange-traded fund (“ETF”). You may obtain a copy of the interim financial report or the annual financial statements, at no cost, by calling the toll-free number 1-800-387-0614, by writing to us at Mackenzie Financial Corporation, 180 Queen Street West, Toronto, Ontario M5V 3K1, by visiting our website at www.mackenzieinvestments.com or by visiting the SEDAR website at www.sedar.com.

Unitholders may also contact us using one of these methods to request a copy of the ETF’s proxy voting policies and procedures, proxy voting disclosure record or quarterly portfolio disclosure. For more information, please refer to the ETF’s Prospectus and ETF Facts, which may also be obtained, at no cost, using any of the methods outlined above. For the ETF’s current net asset value per unit and for more recent information on general market events, please visit our website.

A NOTE ON FORWARD-LOOKING STATEMENTS

This report may contain forward-looking statements that reflect our current expectations or forecasts of future events. Forward-looking statements include statements that are predictive in nature, depend upon or refer to future events or conditions, or include words such as “expects”, “anticipates”, “intends”, “plans”, “believes”, “estimates”, “preliminary”, “typical” and other similar expressions. In addition, these statements may relate to future corporate actions, future financial performance of a fund or a security and their future investment strategies and prospects. Forward-looking statements are inherently subject to, among other things, risks, uncertainties and assumptions that could cause actual events, results, performance or prospects to differ materially from those expressed in, or implied by, these forward-looking statements. These risks, uncertainties and assumptions include, without limitation, general economic, political and market factors in North America and internationally, interest and foreign exchange rates, the volatility of global equity and capital markets, business competition, technological change, changes in government regulations, changes in securities laws and regulations, changes in tax laws, unexpected judicial or regulatory proceedings, catastrophic events, outbreaks of disease or pandemics (such as COVID-19), and the ability of Mackenzie to attract or retain key employees. The foregoing list of important risks, uncertainties and assumptions is not exhaustive. Please consider these and other factors carefully and do not place undue reliance on forward-looking statements.

The forward-looking information contained in this report is current only as of the date of this report. There should not be an expectation that such information will in all circumstances be updated, supplemented or revised whether as a result of new information, changing circumstances, future events or otherwise.



MACKENZIE
Investments

MACKENZIE US INVESTMENT GRADE CORPORATE BOND INDEX ETF (CAD-HEDGED)

INTERIM MANAGEMENT REPORT OF FUND PERFORMANCE | For the Period Ended September 30, 2022

Management Discussion of Fund Performance

November 11, 2022

This Management Discussion of Fund Performance presents the portfolio management team's view on the significant factors and developments that have affected the ETF's performance and outlook in the six-month period ended September 30, 2022 (the "period"). If the ETF was established during the period, "period" represents the period since inception.

In this report, "Mackenzie" and "the Manager" refer to Mackenzie Financial Corporation, the manager of the ETF. In addition, net asset value ("NAV") refers to the value of the ETF as calculated for subscription and redemption purposes, on which the discussion of ETF performance is based.

Please read *A Note on Forward-Looking Statements* on the first page of this document.

Results of Operations

Investment Performance

During the period, the ETF returned -11.6% (after deducting fees and expenses). This compares with the Solactive Select USD Investment Grade Corporate Hedged to CAD Index return of -12.6%. All index returns are calculated on a total return basis in Canadian dollar terms. Investors cannot invest in an index without incurring fees, expenses and commissions, which are not reflected in the index returns.

Mounting concerns about inflation, continued supply chain issues and higher input costs prompted many global central banks to increase their policy rates aggressively over the period. The U.S. Federal Reserve increased its federal funds rate by 275 basis points, ending the period at 3.25%, and it indicated that more increases should be expected. This unprecedented pace of policy action led to heightened volatility and uncertainty in fixed income markets. Short-term yields rose significantly, while a yield curve inversion (when short-term yields are higher than long-term yields) reflected concerns about economic growth.

Through the period, the ETF used a sampling methodology to invest in broadly diversified securities that collectively approximate the full index in terms of key characteristics. Alternatively, the ETF may invest its assets directly in the bonds that make up the index, holding each bond in approximately the same proportion as its weighting in the index. The ETF uses derivative instruments to hedge its foreign currency exposure back to the Canadian dollar.

The difference in performance between the ETF and the index resulted primarily from the sampling methodology of the ETF, and from variations in the timing of currency conversions. These factors were partially offset by management fees and other operating expenses.

Over the period, changes were made to the ETF's holdings to reflect changes in the composition of the index. The Fund's cash was used as collateral for positions in total return swaps and futures.

Net Assets

The ETF's net assets increased by 48.1% during the period to \$467.8 million. This change was composed primarily of \$43.5 million in net losses (including any interest and/or dividend income) from investment performance, after deducting fees and expenses, and an increase of \$195.4 million due to net unitholder activity (including sales, redemptions and cash distributions).

Recent Developments

Because the ETF is an index fund, neither market expectations nor recent developments affect the composition of the portfolio.

Related Party Transactions

Management Fees

The annualized management expense ratio ("MER") for the ETF during the period ended September 30, 2022, was similar to the MER for the year ended March 31, 2022. Total expenses paid vary from period to period mainly as a result of changes in average assets in the ETF. The MERs are presented in the *Financial Highlights* section of this report. The ETF paid management fees to the Manager at the annual rate of 0.15%.

The management fee for the ETF is calculated and accrued daily as a percentage of its NAV. The ETF's management fees were used by the Manager to pay for the costs of managing the investment portfolio of the ETF, including providing investment analysis and recommendations, making investment decisions, making brokerage arrangements for the purchase and sale of the investment portfolio, providing other services and licensing the index, and to pay for all costs and expenses (other than certain specified fund costs as more fully described in the Prospectus) required to operate the ETF.

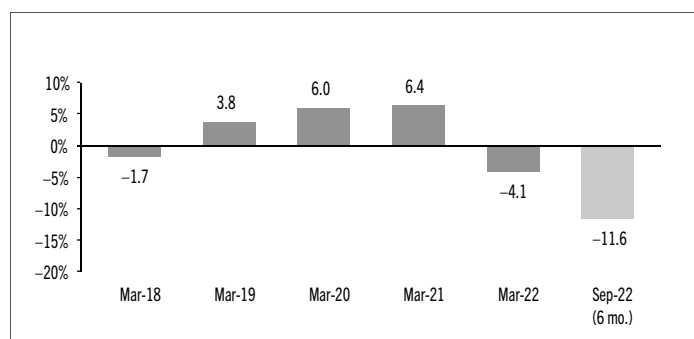
Other Related Party Transactions

Investment funds managed by Mackenzie and its affiliates may invest in the ETF in accordance with the investment objectives of those funds. At September 30, 2022, funds managed by Mackenzie owned 74.9% of the ETF's NAV, funds managed by Canada Life Investment Management Ltd. owned 6.4% of the ETF's NAV, and funds managed by I.G. Investment Management, Ltd. owned 18.7% of the ETF's NAV. All related party transactions are based on the current market price. As a result of these investments, the ETF may be subject to large transaction risk as discussed in the Prospectus. Mackenzie manages this risk to reduce the possibility of any adverse effects on the ETF or on its investors, through such processes as settling transactions in kind, charging creation and/or redemption fees for transactions settling in cash, and establishing appropriate order cut-off time for transactions.

The ETF did not rely on an approval, positive recommendation or standing instruction from the Mackenzie Funds' Independent Review Committee with respect to any related party transactions in the period.

Past Performance

The following bar chart presents the performance of the ETF for each of the fiscal periods shown. The chart shows, in percentage terms, how much an investment made on the first day of each fiscal period, or on the ETF's inception date (January 29, 2018), as applicable, would have increased or decreased by the last day of the fiscal period presented.



MACKENZIE US INVESTMENT GRADE CORPORATE BOND INDEX ETF (CAD-HEDGED)

INTERIM MANAGEMENT REPORT OF FUND PERFORMANCE | For the Period Ended September 30, 2022

Summary of Investment Portfolio at September 30, 2022

PORTFOLIO ALLOCATION	% OF NAV
Bonds	91.4
Bonds	74.9
Swaps*	15.7
Long bond futures**	0.8
Cash and short-term investments	11.7
Other assets (liabilities)	(3.1)

REGIONAL ALLOCATION	% OF NAV
United States	81.5
Cash and short-term investments	11.7
United Kingdom	2.7
Canada	1.5
Netherlands	1.2
Ireland	1.2
Japan	0.7
Spain	0.7
Brazil	0.4
Switzerland	0.4
Australia	0.4
China	0.4
France	0.3
Other assets (liabilities)	(3.1)

SECTOR ALLOCATION	% OF NAV
Corporate bonds – Financial	29.8
Cash and short-term investments	27.9
Corporate bonds – Industrial	25.7
Corporate bonds – Communication	8.6
Corporate bonds – Infrastructure	7.5
Corporate bonds – Energy	2.2
Corporate bonds – Utility	0.8
Corporate bonds – Federal	0.2
Other	0.2
Corporate bonds – Real estate	0.1
Foreign government bonds	0.1
Other assets (liabilities)	(3.1)

BONDS BY CREDIT RATING [†]	% OF NAV
AAA	1.2
AA	7.2
A	25.4
BBB	40.9
Less than BBB	0.1
Unrated	0.1

* Notional values represent 16.2% of NAV for total return swaps.

** Notional values represent 0.8% of NAV for long bond futures.

[†] Credit ratings and rating categories are based on ratings issued by a designated rating organization.

TOP 25 POSITIONS	% OF NAV
Issuer	
Cash and short-term investments	28.7
Oracle Corp. 2.88% 03-25-2031	0.6
The Goldman Sachs Group Inc. 3.50% 11-16-2026	0.6
Bank of America Corp. F/R 03-05-2024 Callable 2023	0.5
JPMorgan Chase & Co. F/R 07-23-2024 Callable 2023	0.5
Anheuser-Busch Cos. LLC 4.90% 02-01-2046 Callable 2045	0.5
The Goldman Sachs Group Inc. F/R 05-01-2029 Callable 2028	0.5
Verizon Communications Inc. 2.36% 03-15-2032	0.5
Morgan Stanley 4.00% 07-23-2025	0.5
Wells Fargo & Co. 3.00% 10-23-2026	0.5
The Goldman Sachs Group Inc. 4.00% 03-03-2024	0.5
Bank of America Corp. F/R 12-20-2028 Callable 2027	0.4
Wells Fargo & Co. 4.10% 06-03-2026	0.4
Dell International LLC 4.90% 10-01-2026	0.4
Wells Fargo & Co. F/R 06-02-2028	0.4
The Boeing Co. 5.81% 05-01-2050 Callable 2049	0.4
Morgan Stanley 3.70% 10-23-2024	0.4
Citigroup Inc. 3.89% 01-10-2028 Callable 2027	0.4
JPMorgan Chase & Co. F/R 10-15-2030 Callable 2029	0.4
AerCap Ireland Capital DAC 3.30% 01-30-2032	0.4
Amazon.com Inc. 3.15% 08-22-2027	0.4
Bank of America Corp. F/R 07-23-2029 Callable 2028	0.4
AbbVie Inc. 2.95% 11-21-2026	0.4
AT&T Inc. 2.25% 02-01-2032 Callable 2031	0.4
CVS Health Corp. 5.05% 03-25-2048 Callable 2047	0.4
Top long positions as a percentage of total net asset value	39.5

The ETF held no short positions at the end of the period.

The investments and percentages may have changed since September 30, 2022, due to the ongoing portfolio transactions of the ETF.

MACKENZIE US INVESTMENT GRADE CORPORATE BOND INDEX ETF (CAD-HEDGED)

INTERIM MANAGEMENT REPORT OF FUND PERFORMANCE | For the Period Ended September 30, 2022

Financial Highlights

The following tables show selected key financial information about the ETF and are intended to help you understand the ETF's financial performance for each of the fiscal periods presented below. In the period when the ETF was established, "period" represents the period from inception to the end of that fiscal period. The inception date can be found under *Past Performance*.

THE ETF'S NET ASSETS PER SECURITY (\$)¹

CAD Units (Ticker: QUIG)	Sep. 30 2022	Mar. 31 2022	Mar. 31 2021	Mar. 31 2020	Mar. 31 2019	Mar. 31 2018
Net assets, beginning of period	96.29	104.07	101.22	98.43	98.34	100.00
Increase (decrease) from operations:						
Total revenue	1.77	3.61	3.85	3.99	3.95	0.73
Total expenses	(0.01)	–	(0.02)	(0.02)	(0.02)	(0.03)
Realized gains (losses) for the period	(3.35)	(3.72)	6.76	(0.45)	(0.25)	(3.47)
Unrealized gains (losses) for the period	(8.46)	(3.24)	(4.18)	(1.47)	3.16	1.59
Total increase (decrease) from operations²	(10.05)	(3.35)	6.41	2.05	6.84	(1.18)
Distributions:						
From net investment income (excluding Canadian dividends)	(1.30)	(3.70)	(3.51)	(3.36)	(3.44)	–
From Canadian dividends	–	–	–	–	–	(0.08)
From capital gains	–	–	(2.14)	–	–	–
Return of capital	–	–	–	(0.01)	–	–
Total annual distributions³	(1.30)	(3.70)	(5.65)	(3.37)	(3.44)	(0.08)
Net assets, end of period	83.84	96.29	104.07	101.22	98.43	98.34

(1) These calculations are prescribed by securities regulations and are not intended to be a reconciliation between opening and closing net assets per unit. This information is derived from the ETF's unaudited interim financial statements and audited annual financial statements. The net assets per unit presented in the financial statements may differ from the net asset value per unit calculated for ETF pricing purposes. An explanation of these differences, if any, can be found in the *Notes to Financial Statements*.

(2) Net assets and distributions are based on the actual number of units outstanding at the relevant time. The increase/decrease from operations is based on the weighted average number of units outstanding over the fiscal period.

(3) Distributions were paid in cash/reinvested in additional units of the ETF, or both.

Index Provider Disclaimer

The Mackenzie US Investment Grade Corporate Bond Index ETF (CAD-Hedged) is not sponsored, promoted, sold or supported in any other manner by Solactive AG nor does Solactive AG offer any express or implicit guarantee or assurance either with regard to the results of using Solactive Select USD Investment Grade Corporate Hedged to CAD Index (the "Underlying Index"), including its trademark and/or prices, at any time or in any other respect. The Underlying Index is calculated and published by Solactive AG. Solactive AG uses its best efforts to ensure that the Underlying Index is calculated correctly. Irrespective of its obligations toward Mackenzie, Solactive AG has no obligation to point out errors in the Underlying Index to third parties including but not limited to investors and/or financial intermediaries of the Mackenzie US Investment Grade Corporate Bond Index ETF (CAD-Hedged). Neither publication of the Underlying Index by Solactive AG nor the licensing of the Underlying Index or Underlying Index trademark for the purpose of use in connection with the Mackenzie US Investment Grade Corporate Bond Index ETF (CAD-Hedged) constitutes a recommendation by Solactive AG to invest capital in Mackenzie US Investment Grade Corporate Bond Index ETF (CAD-Hedged) nor does it in any way represent an assurance or opinion of Solactive AG with regard to any investment in Mackenzie US Investment Grade Corporate Bond Index ETF (CAD-Hedged).

RATIOS AND SUPPLEMENTAL DATA

CAD Units (Ticker: QUIG)	Sep. 30 2022	Mar. 31 2022	Mar. 31 2021	Mar. 31 2020	Mar. 31 2019	Mar. 31 2018
Total net asset value (\$000) ¹	467,800	315,843	399,617	544,556	281,502	147,508
Units outstanding (000) ¹	5,580	3,280	3,840	5,380	2,860	1,500
Management expense ratio (%) ²	0.16	0.17	0.17	0.21	0.28	0.28
Management expense ratio before waivers or absorptions (%) ²	0.16	0.17	0.17	0.21	0.28	0.28
Trading expense ratio (%) ³	–	–	–	–	–	–
Trading expense ratio before reimbursements (%) ³	–	–	–	–	–	–
Portfolio turnover rate (%) ⁴	9.30	29.03	69.12	63.01	85.30	n/a
Net asset value per unit (\$)	83.84	96.29	104.06	101.20	98.42	98.32
Closing market price (\$) ⁵	83.91	96.18	104.16	100.57	98.46	98.29

(1) This information is provided as at the end of the fiscal period shown.

(2) Management expense ratio ("MER") is based on total expenses, excluding commissions and other portfolio transaction costs, income taxes and withholding taxes, for the stated period and is expressed as an annualized percentage of daily average net assets during the period, except as noted. If the ETF was established in the period, the MER is annualized from the date of inception to the end of the period. Where the ETF directly invests in securities of another fund (including other ETFs), the MER presented for the ETF includes the portion of MERs of the other fund(s) attributable to this investment. Any income distributions received from ETFs managed by the Manager, with the intention of offsetting fees paid within those ETFs but which are not considered to be duplicative fees under regulatory requirements, are treated as waived expenses for MER purposes. The Manager may waive or absorb operating expenses at its discretion and stop waiving or absorbing such expenses at any time without notice.

(3) The trading expense ratio ("TER") represents total commissions and other portfolio transaction costs expressed as an annualized percentage of daily average net assets during the period. Where the ETF invests in securities of another fund (including other ETFs), the TER presented for the ETF includes the portion of TERs of the other fund(s) attributable to this investment. The Manager may reimburse the ETF for certain brokerage commissions and other transaction costs (including those payable to the custodian or its agents). The Manager may make these reimbursements at its discretion and stop these reimbursements at any time without notice.

(4) The ETF's portfolio turnover rate indicates how actively the ETF's portfolio advisor manages its portfolio investments. A portfolio turnover rate of 100% is equivalent to the ETF buying and selling all of the securities in its portfolio once in the course of the period. The higher the ETF's portfolio turnover rate in a period, the greater the trading costs payable by the ETF in the period, and the greater the chance of an investor receiving taxable capital gains in the year. There is not necessarily a relationship between a high turnover rate and the performance of the ETF. The portfolio turnover rate is not provided when the ETF is less than one year old.

(5) Closing market price, or the midpoint of the bid and ask prices in the absence of a closing market price, on the last trading day of the period as reported on the Toronto Stock Exchange.